



**METAGUISE™**  
HOME OF LUXURY METAL

PART ONE

# METAFORM



Tap for google pin

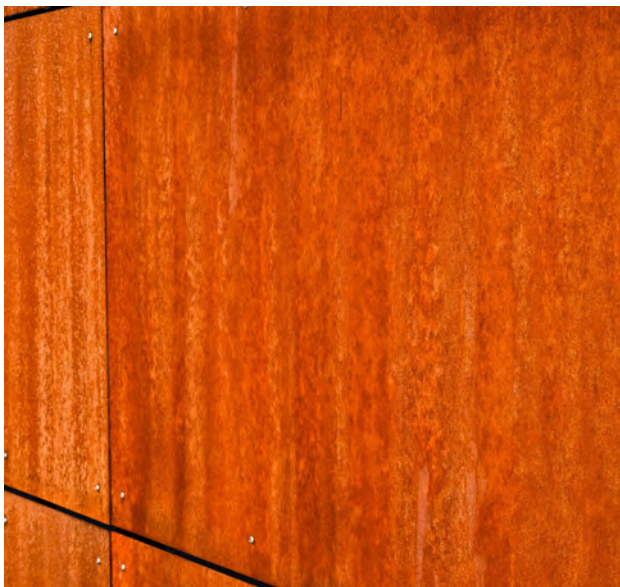
The use of metal in architecture is rapidly increasing for its versatility, aesthetics, economic value and functionality solutions.

Metaguise™ offers a seamless experience through a meticulous tech consult and delivers flawlessly crafted **modular metal architecture**.

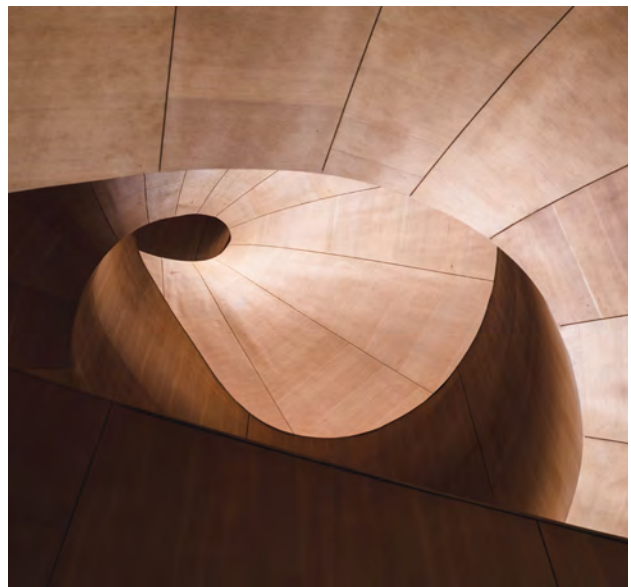
---

# METAL ARCHITECTURE

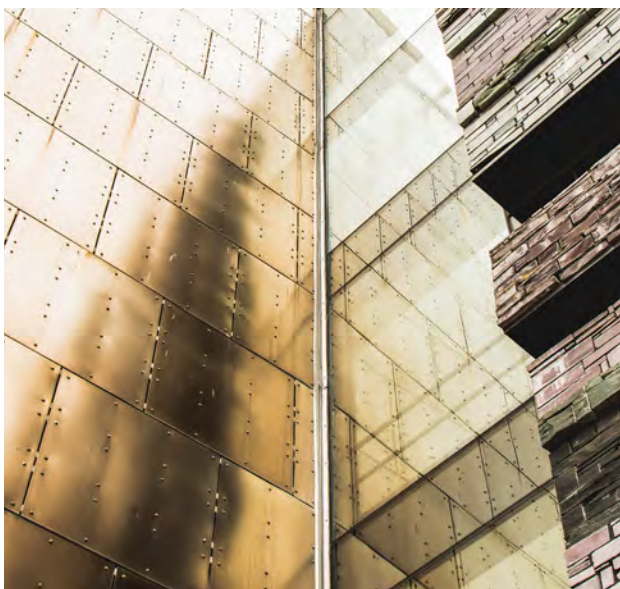
CORTEN STEEL



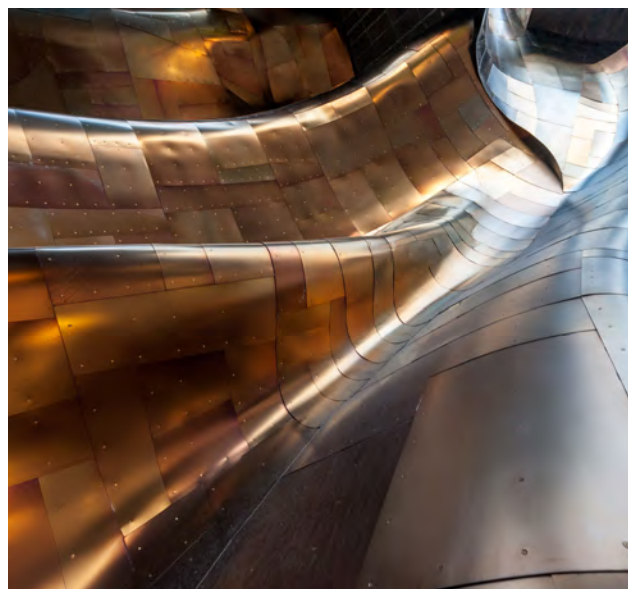
COPPER



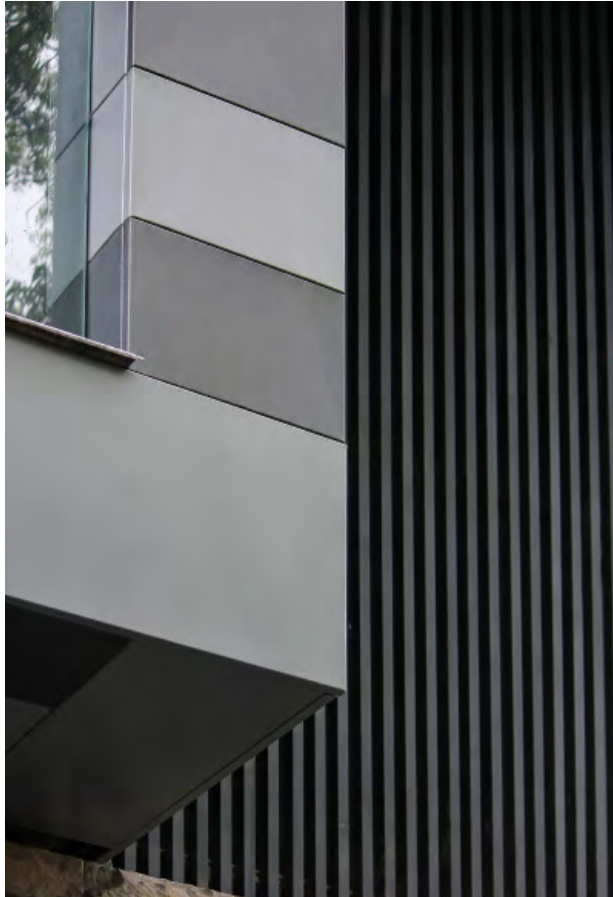
BRASS



STAINLESS STEEL



# ALUMINIUM



ENTIRE Metaguisse™ RANGE OF CLADS ARE :-



MAINTENANCE  
FREE



FIRE  
RESISTANT



ULTRA  
DURABLE



SEEPAGE  
FREE



BUY BACK  
VALUE



RECYCLABLE



TERMITE  
PROOF



CORROSION  
RESISTANT

# The Metaguise™ Experience

The Metaguise™ engine runs on Trust, Transparency and Technical Expertise. We follow a thorough 47 step process to provide a hassle free experience to our clients, with meticulous services and workmanship.

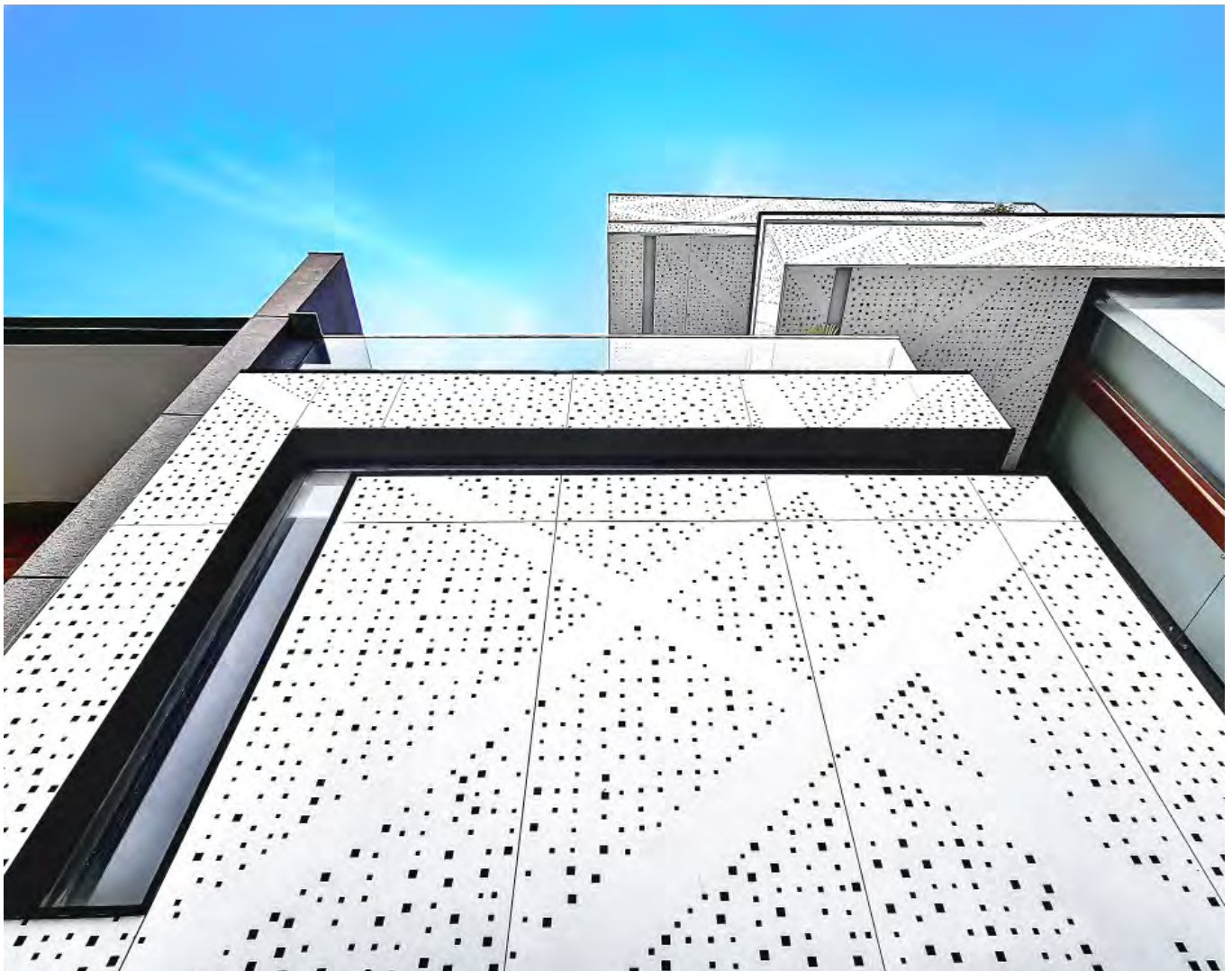
Our process includes:

- Civil assessment at site
- Facade Consultation at site till completion
- Drawings for the metal facade intersection with concrete, stone and other surfaces of the building
- Turn key installation
- 24 hour after sales service in Delhi/NCR



Our products, developed in aluminium and other metals are engineered to perfection; retaining an accuracy of upto 3 mm.

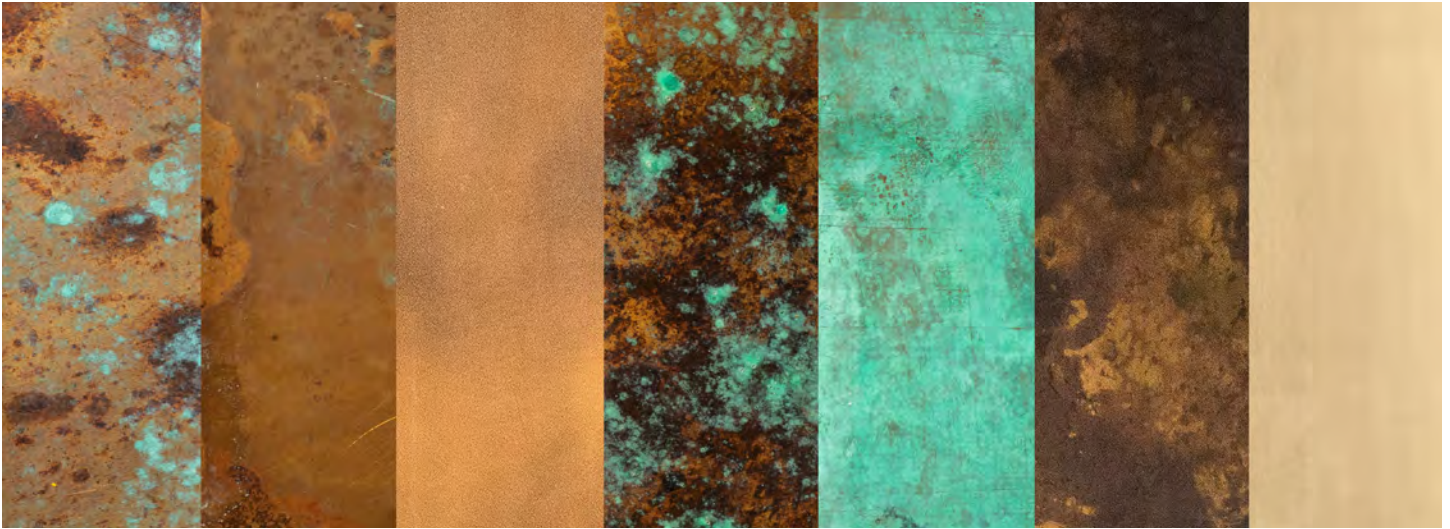
Designed in Solidworks, Rhino, Grasshopper and AutoCAD the facades are uniquely customised for every building. In addition to the extensive variety of forms, we also build kinetic and parametric structures.



Our products come in an astounding variety of VOC free surface finishes that include textures like wood, corten steel, concrete and many more.



The surface coatings come with exterior certification and warranty of 15 to 35 years \*



Our products are engineered to uphold high safety standards, certified by testing labs in extreme climatic conditions for static load, wind resistance, joineries, coatings and finishes

We ensure Safety,  
Quality, Discipline and Productivity, during installation at site.

Our extensive inhouse team of engineers and designers ensure the highest quality product design and development.

# SURFACE WARRANTY CERTIFICATION



AVANZA ENTERPRISES PVT LTD guarantees to:

**CITY HOMES**

Code: WOODEN SUBLIMATION

Project:

A2/17, DLF PHASE 1  
GURUGRAM HARYANA

\*FOR REFERENCE ONLY



✓ INTERIOR

✓ EXTERIOR

An exotic piece of engineering artwork that is designed while keeping a balance between design intent and design response.







An unimaginable blend of Art and Architecture, algorithm based processes free us from any physical limitations and enable the creation of complex geometric and abstract shapes and structures. A beautiful narrative of illusion and movement, Metaguisse™ Parametric designs are seamless, created with maximum precision and efficiency.

An astonishing variety of patterns inspired by nature's most complex forms, we aim to discover the abundant possibilities of this extraordinary fusion of art and engineering.

The digitization of production and technological resources connected to the development of increasingly sophisticated softwares and tools has a direct impact on the modern practice of architecture and urbanism in parametric structures.



Blending complexity and variety, thus rejecting homogenous utilitarianism. Shared priorities involve urbanism, interior design, an architectural wonder, and fashion. MetaCoin is one product that can give you infinite possibilities for such plans.



---

TECHNICAL SPECIFICATIONS: Aluminium Alloy 1200 / Copper / Brass / Stainless Steel / Corten Steel  
Surface finishes - Pure Polyester / Sublimation / CEPL / Clear Coat

# METAFLUTES

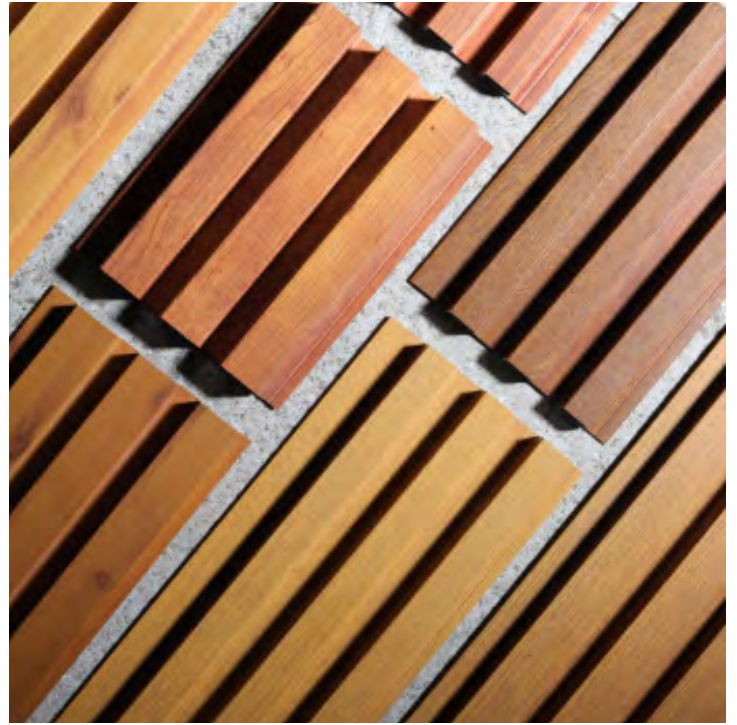
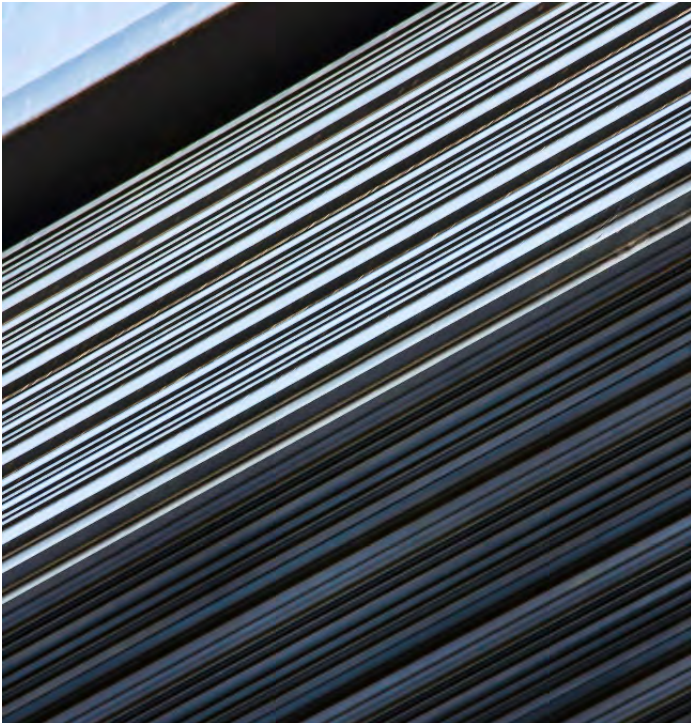
✓ INTERIOR

✓ EXTERIOR

✓ GATE

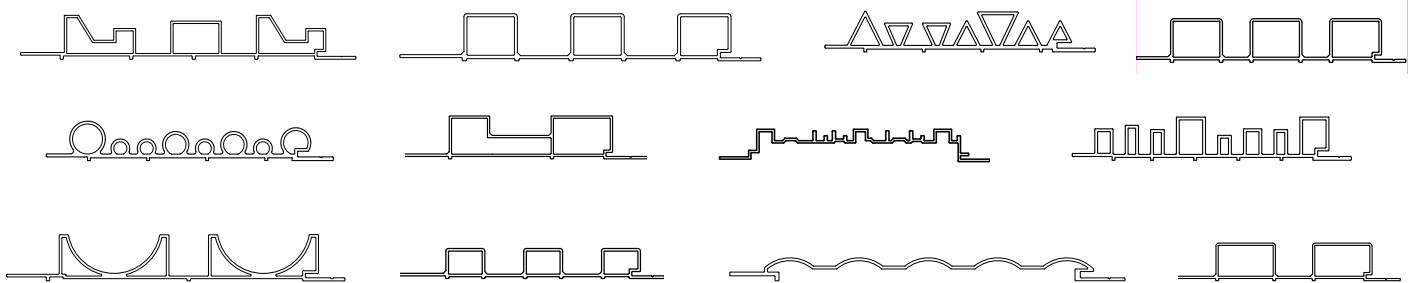
The MetaFlutes, with their ability to stoutly support the structure while also putting a brilliant facade forward for onlookers, bring together the best qualities of light weight ductile metals. These extrusions protect the building from dynamic weather conditions.





TECHNICAL SPECIFICATIONS : Aluminium Alloy 6063 Temper T6  
Surface finishes - Pure Polyester / Sublimation / Anodization

FORMS :



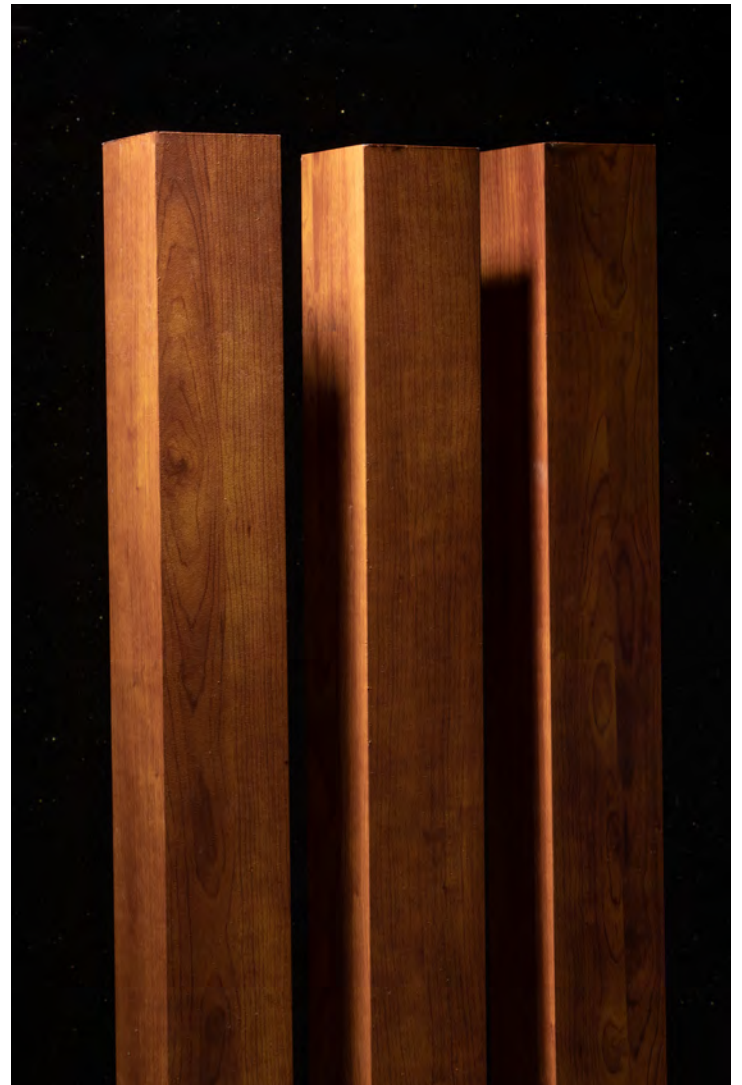
# METALLOUVER

✓ INTERIOR

✓ EXTERIOR

✓ GATE

A beautiful arrangement of parallel, horizontal and vertical metal louvers available in a variety of shapes, angled to admit light and air but to keep out rain and direct sunshine.



The boxed balconies covered with aluminium MetaWood louvers, developed at MetaLab™, offer a sustainable and zero maintenance solution while creating a modern looking edifice.

The masterpiece lodging patterned like an Opera house, is a composition of different sections and levels, each with its own appeal.

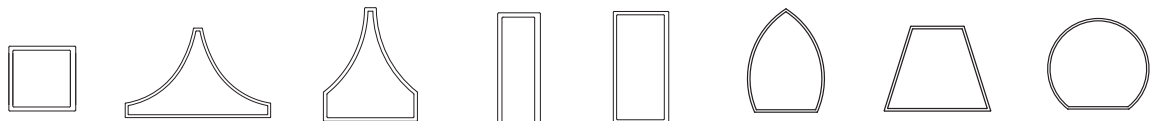
The C Pro, & anchoring MetaWood at the entrance along with plain grey fluted profile gate add to the charm and display a variation of the same clear and neat lines.



TECHNICAL SPECIFICATIONS : Aluminium Alloy 6063 Temper T6

Surface finishes - Pure Polyester / Sublimation / Anodization

FORMS :





# METACASSETTE

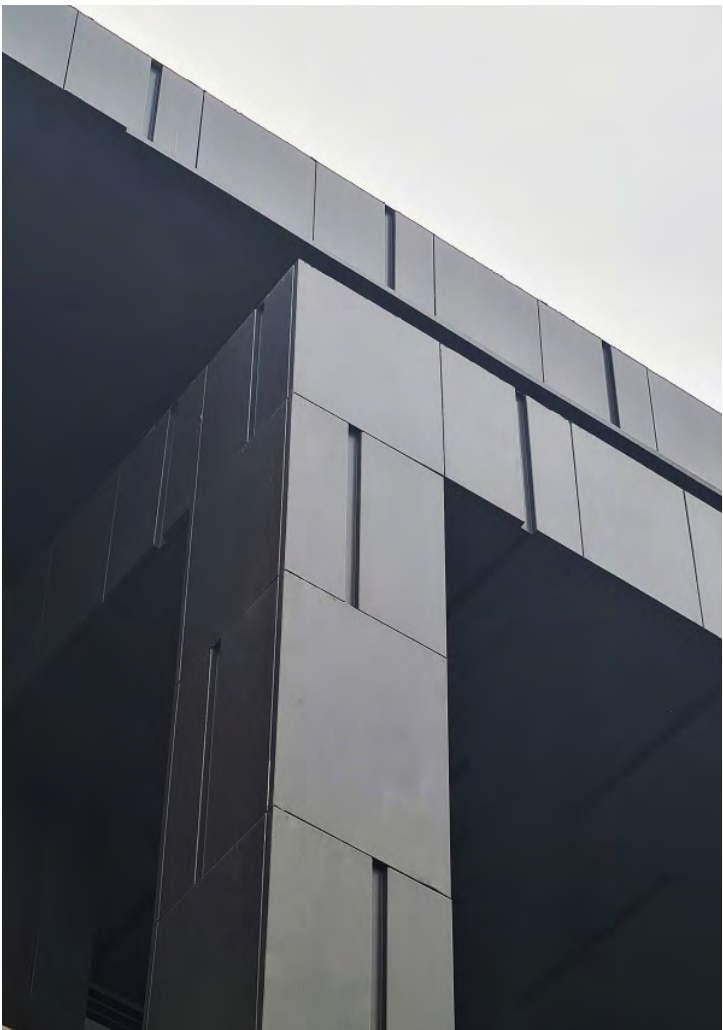
✓ INTERIOR

✓ EXTERIOR

✓ GATE

## SOLID PANEL

A full metal jacket made of solid aluminium panels give the building an extended life. It defines the building with its outstanding finish and form.

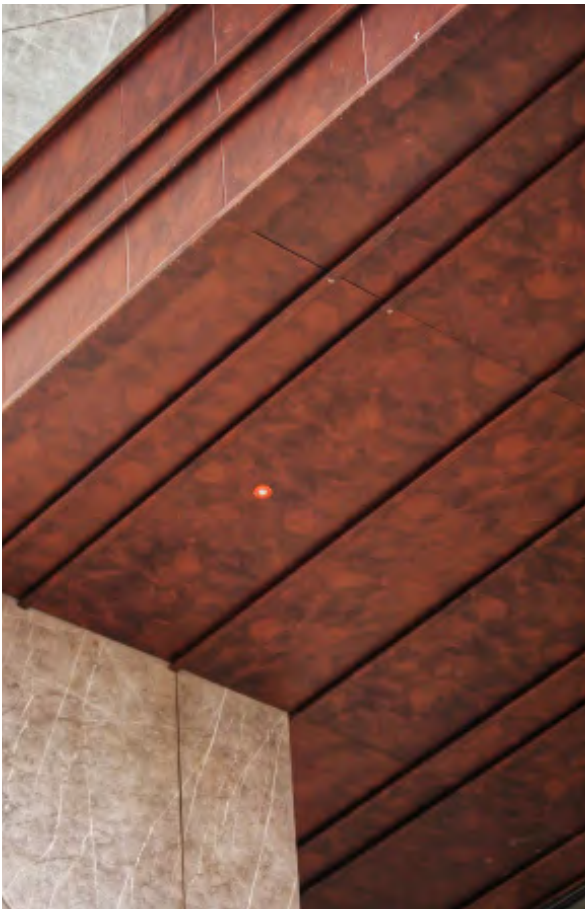


## PERFORATION

Setting stage for a bonafide feel of the classic pierced metal technique, is the perforated MetaCassette, acting as an instinctive sun shade, bringing natural ventilation for good measure.







---

TECHNICAL SPECIFICATIONS : Aluminium Alloy 1200 / Copper / Brass / Stainless Steel / Corten Steel  
Surface finishes - Pure Polyester / Sublimation / CEPL / Clear Coat

---



# CASCADING KEYS

✓ INTERIOR

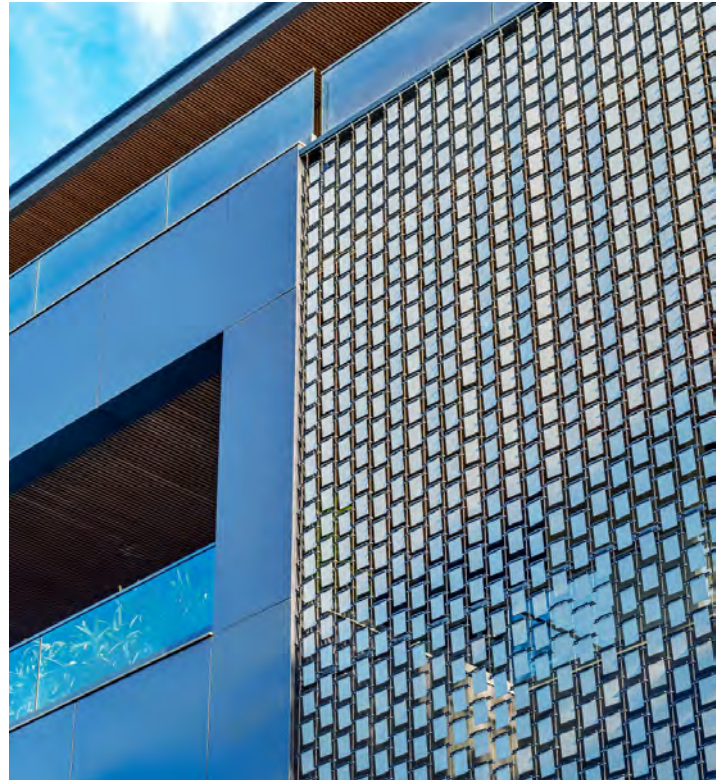
✓ EXTERIOR

---

Breaking the monotony of concrete and bringing life into your homes with a beautifully crafted and flawlessly engineered aluminium and stainless steel facade that interacts with natural elements to create fluidic forms.

Cascading keys move wildly to the rhythm of the wind, composing surreal symphonies; or remain unmoved and serene like still water, subtly teased by the light as it peaks and fades through the day.





TECHNICAL SPECIFICATIONS : SS 304 + Aluminium Alloy 1200  
Surface finishes - Pure Polyester / Sublimation

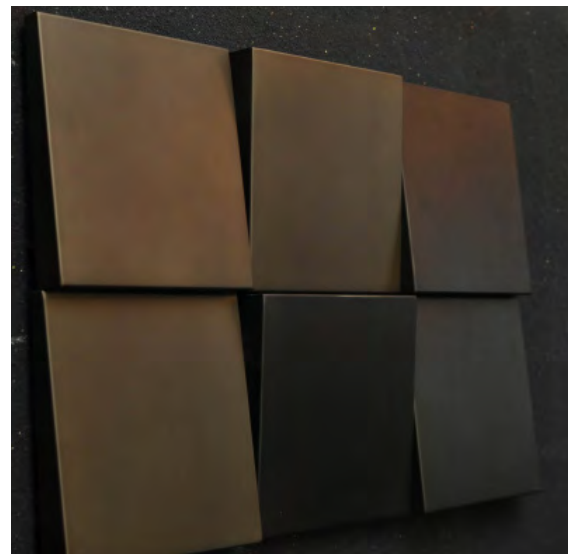
# META3D

✓ INTERIOR

✓ EXTERIOR

Designed to emulate the triumph of fashioning a fragment of imagination to an imprint of excellence, our 3D options explore the intrinsic qualities of metal in these striking avant-garde forms and add a striking dimension to a surface.

The coalition of the perforation in these blocks, each catching light and casting distinct shadows makes for a spectacular sight.



TECHNICAL SPECIFICATIONS : Aluminium Alloy 1200 / Copper / Brass / Stainless Steel / Corten Steel  
Surface finishes- Pure Polyester / Sublimation / CEPL / Clear Coat

# METAPLANKS

---

✓ INTERIOR

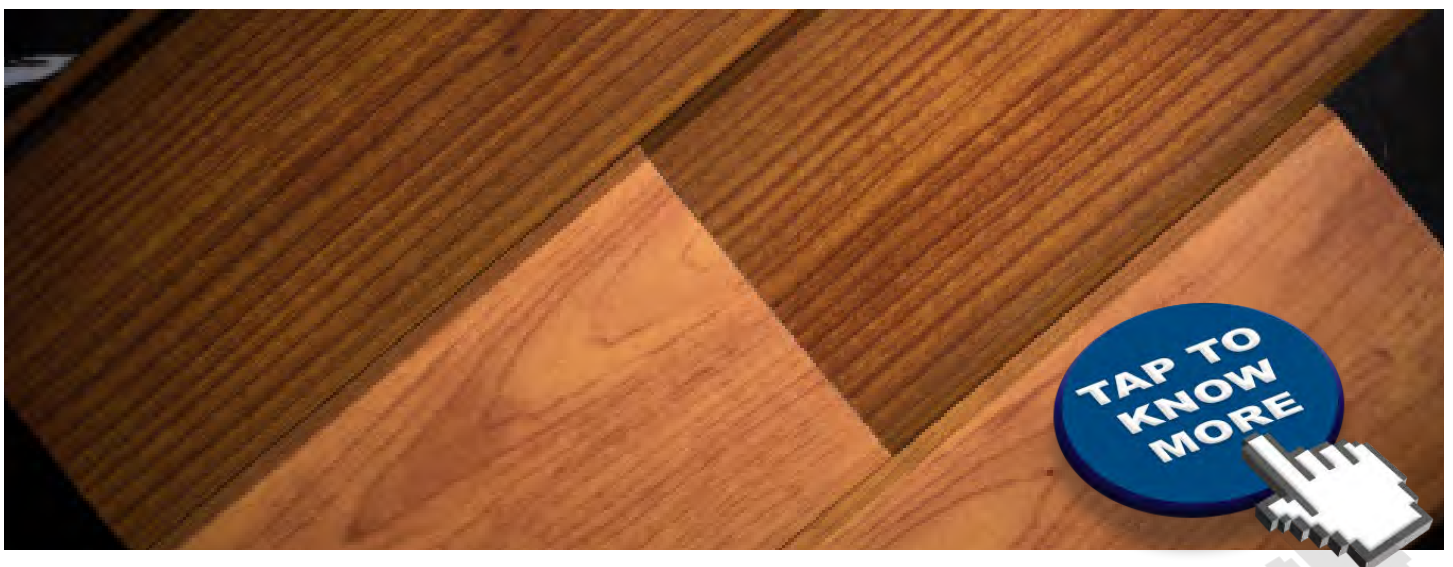
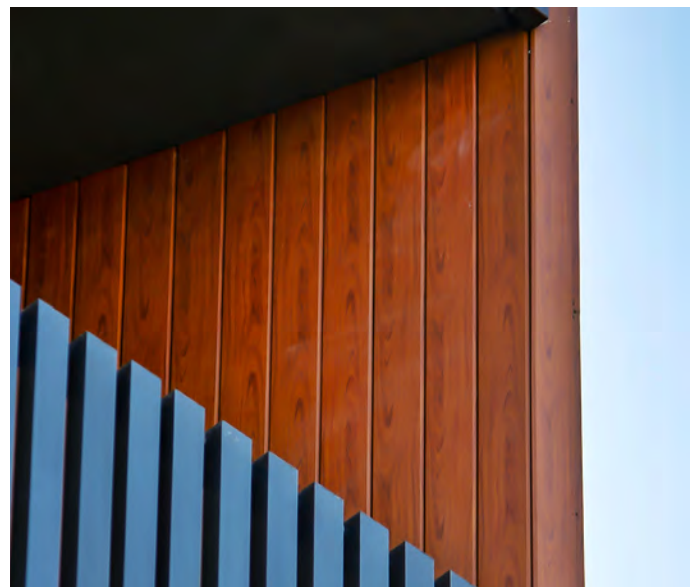
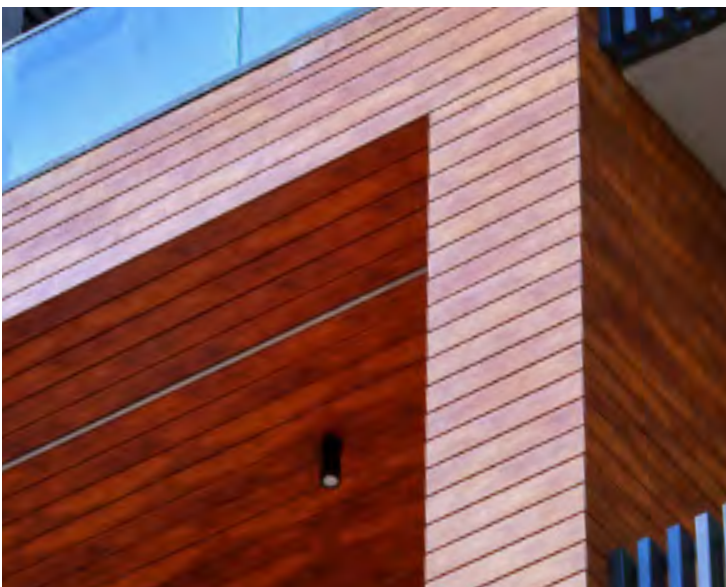
✓ EXTERIOR

✓ GATE

---

MetaPlank is an alternative to natural planks. Aluminium Extrusions which have minute gaps and are joint together with tongue and groove mechanism that create slim, linear designs. This joinery system produces striking lines on buildings creating a bespoke look.

MetaPlank is a maintenance free and sustainable option for anyone looking for a long lasting and robust facade.



---

TECHNICAL SPECIFICATIONS : Aluminium Alloy 1200 / Copper / Brass / Stainless Steel / Corten Steel  
Surface finishes - Pure Polyester / Sublimation / CEPL / Clear Coat

---

# META C-PRO

---

✓ INTERIOR

✓ EXTERIOR

---



This innovative product is a sleek and seamless highlight on the façade. It allows for no visible technical components that would otherwise compromise its sophisticated design.

Meta C Pro has many properties that make it a superior building material: It is strong, durable, and easy to maintain.



---

TECHNICAL SPECIFICATIONS : Aluminium Alloy 1200

Surface finishes - Pure Polyester / Sublimation

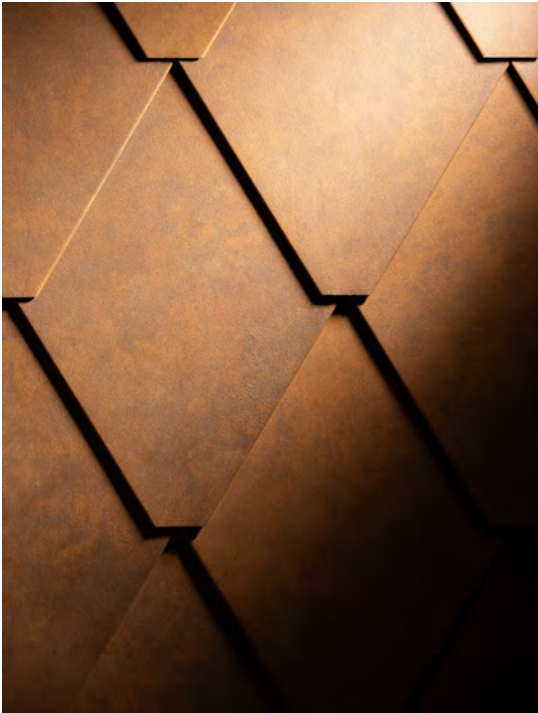
---

# META SHINGLE

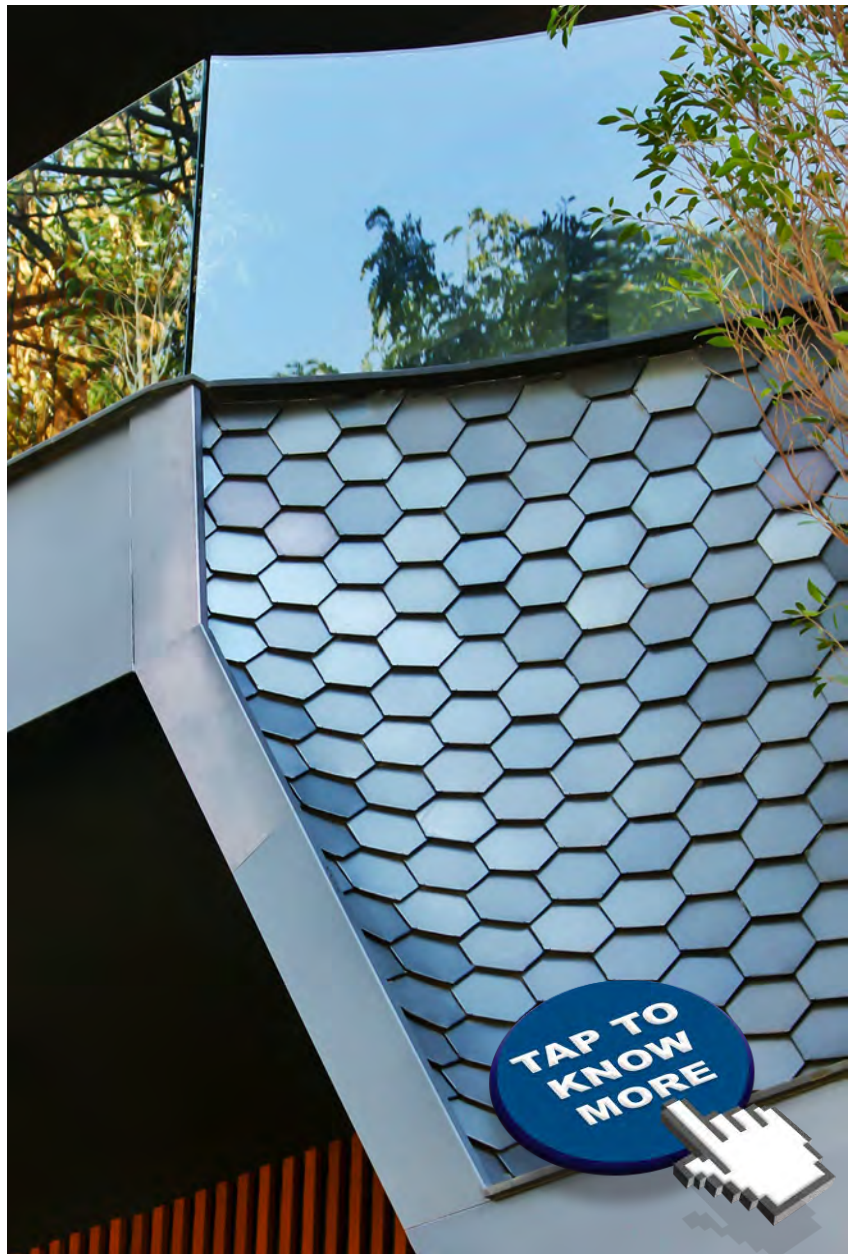
✓ INTERIOR

✓ EXTERIOR

✓ GATE



Overlapping MetaShingles interlocked intelligently adding a 3rd dimension to your plane.



TECHNICAL SPECIFICATIONS : Aluminium Alloy 1200 / Copper / Brass / Stainless Steel / Corten Steel  
Surface finishes - Pure Polyester / Sublimation / CEPL / Clear Coat

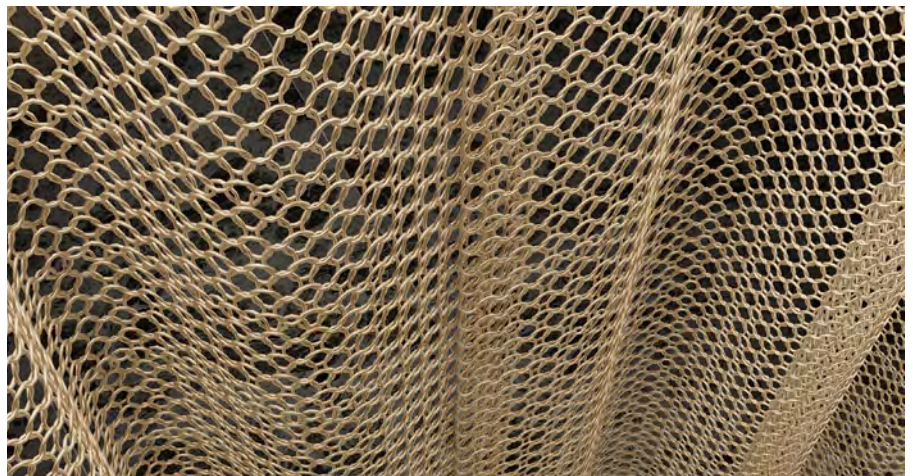
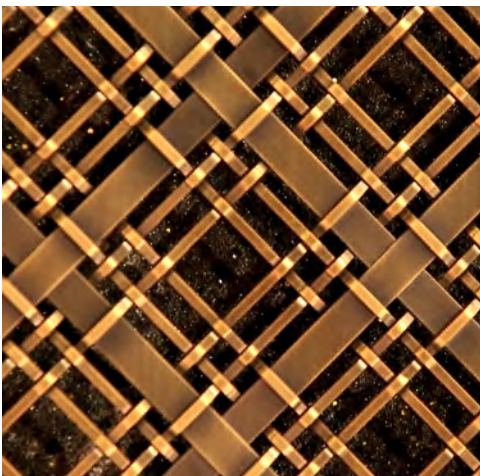
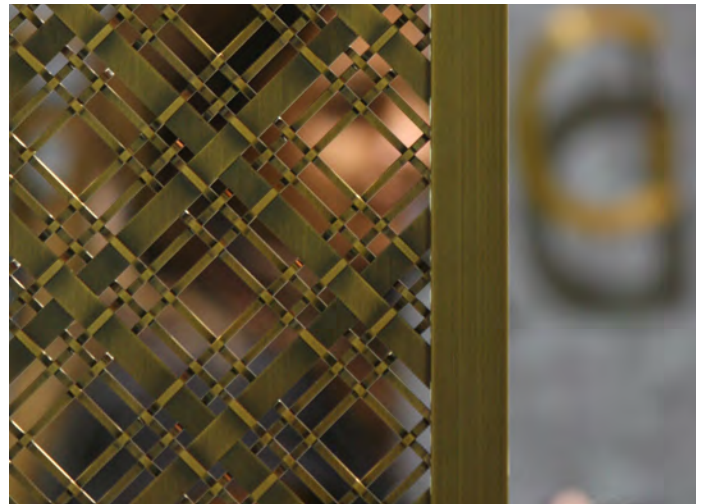
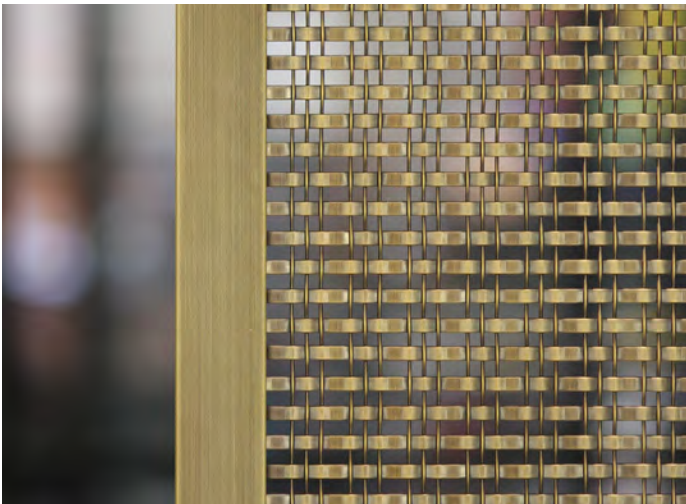


✓ INTERIOR

✓ EXTERIOR

✓ GATE

Infused with an element of intrepidity through its pattern, the MetaMesh is made of Metal. Taking its cues from a room divider, these pieces are designed for use in multiple applications viz., facade, divider screen, shutters and more.







TECHNICAL SPECIFICATIONS : SS 304 and Aluminium  
Surface coating - PVD, White Polyster

[9811604449](tel:9811604449) | [9355604449](tel:9355604449) | [contactus@metaguise.com](mailto:contactus@metaguise.com) | [www.metaguise.com](http://www.metaguise.com)

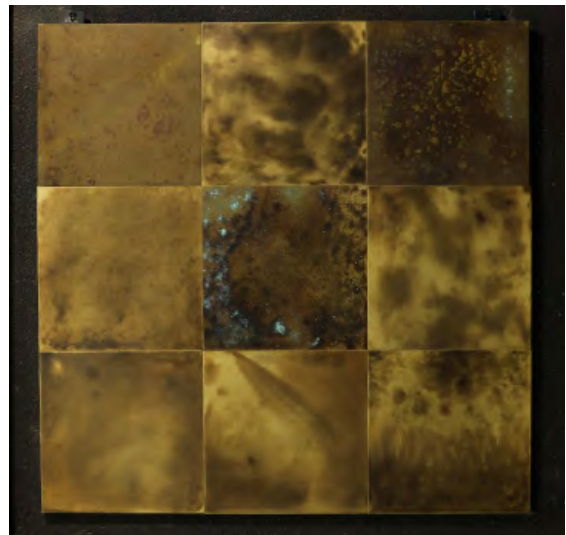
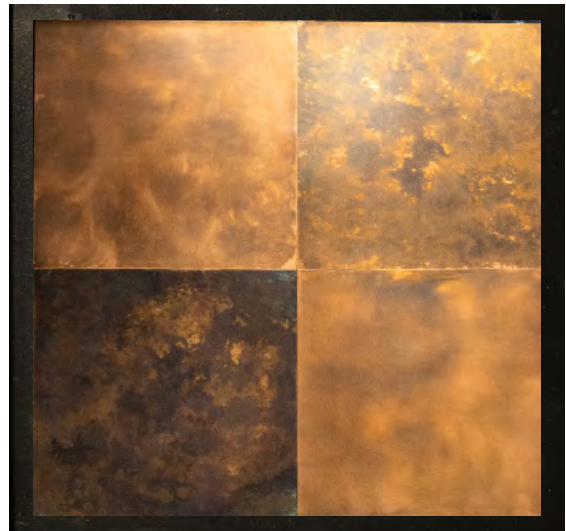
# WALL CLADS



Metaguisse™ reveals an ultra sustainable, maintenance-free range of interior clads giving your home interiors an aesthetic upgrade whilst offering freedom from seepage, fire, and stains forever.

Not only a different form and vibe of the panels but also a plethora of textures helping you decide your dream option.

- Seepage free
- Termite proof
- Buy Back Value
- Ultra Durable
- Fire Resistant
- Recyclable



# VISION vs REALITY

A Photo gallery of 3D Vs our Actual Facade Projects



K 3/67, DLF Phase II, Gurgaon



3D

N 29, Greater Kailash I, New Delhi

**METAPYRAMID**



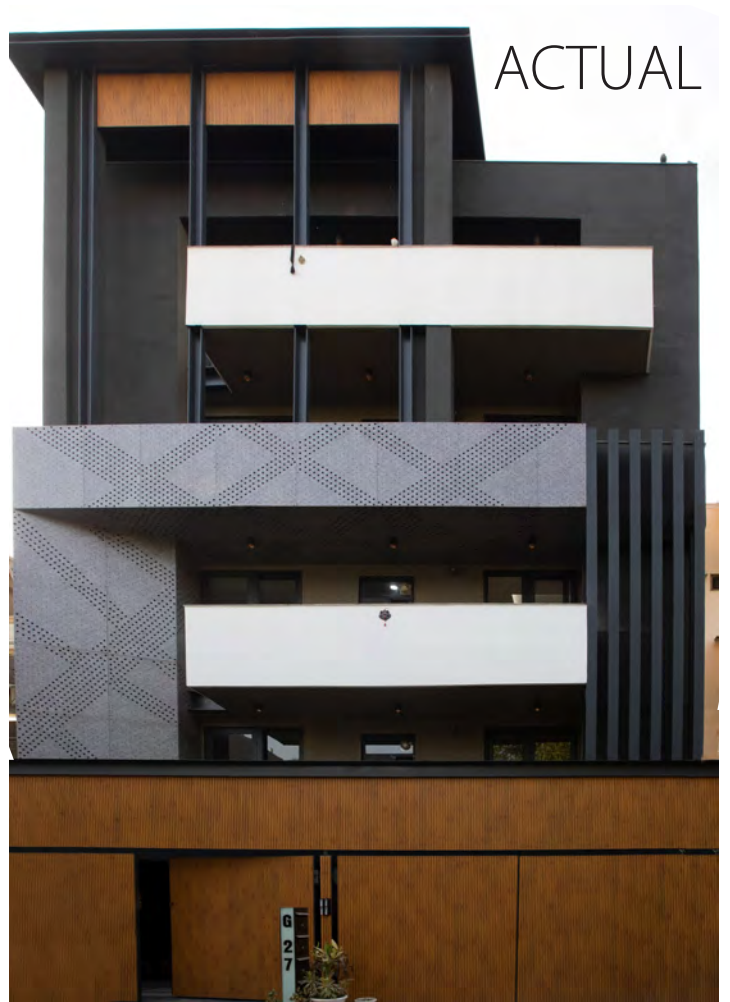
ACTUAL



622, Sector 15 Part I, Gurgaon

A 2/17, DLF Phase I, Gurgaon





G-27, South City I, Gurgaon

98 E Space, Nirvana, Gurgaon





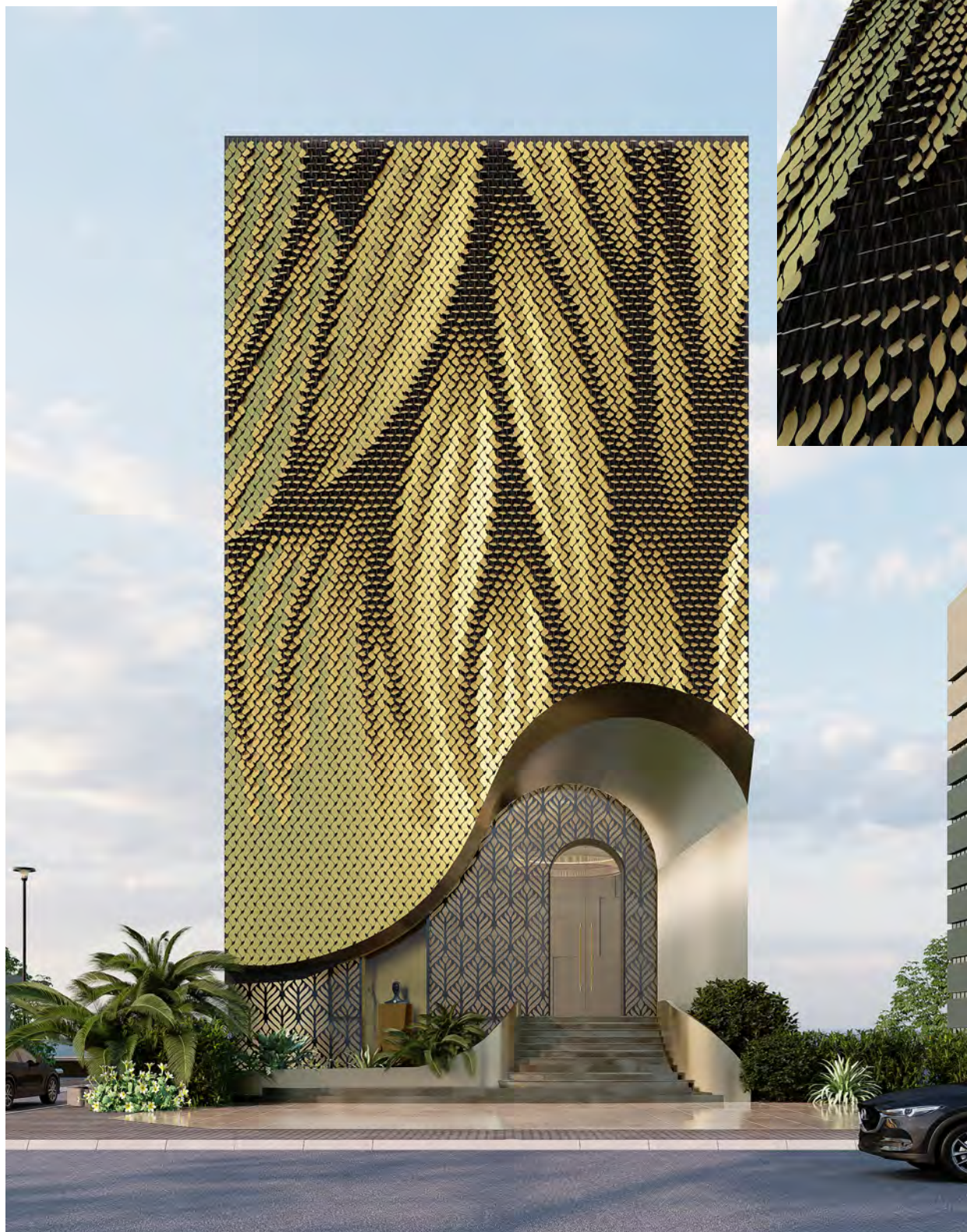
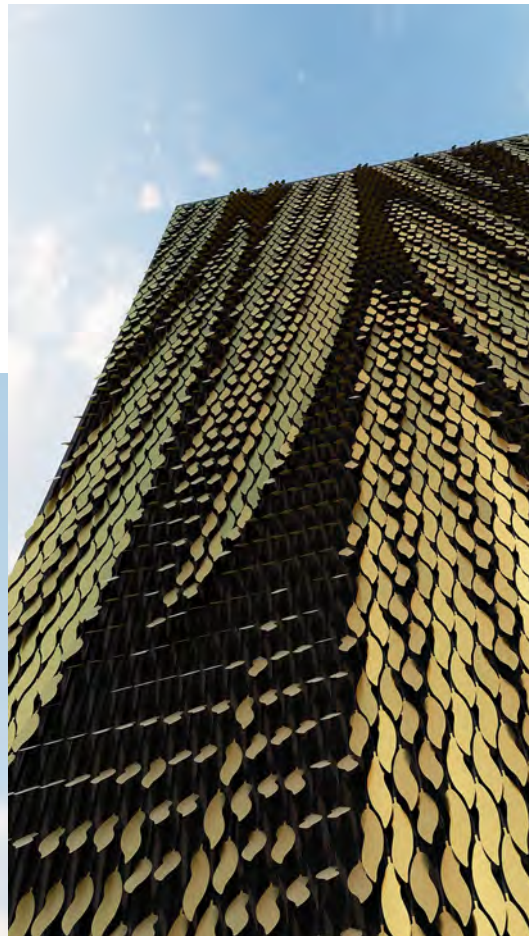
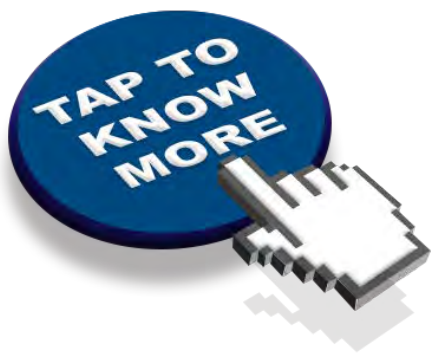


ACTUAL

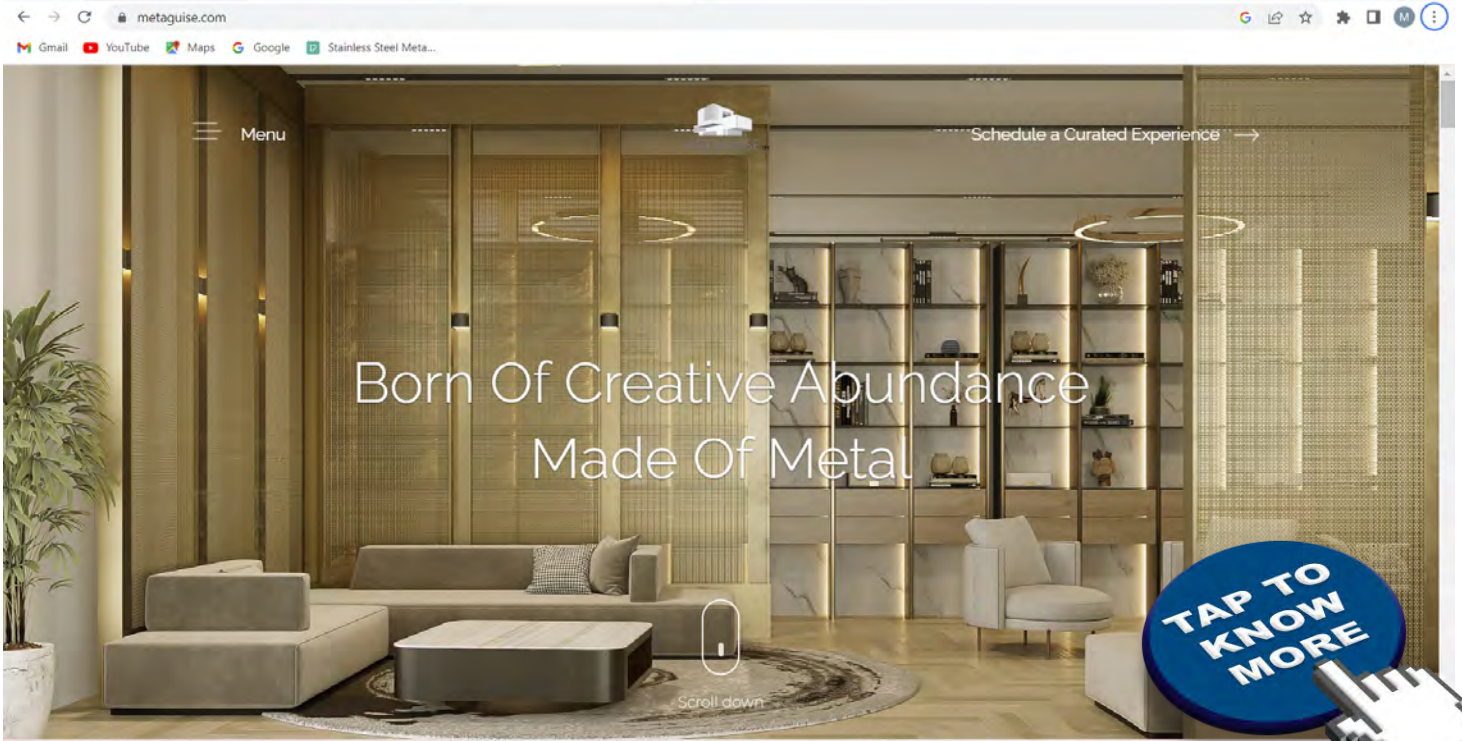


# PARAMETRIC PROJECTS





# WEBSITE



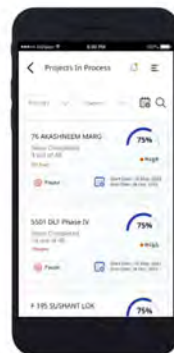
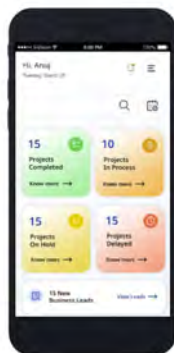
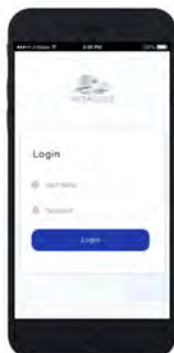
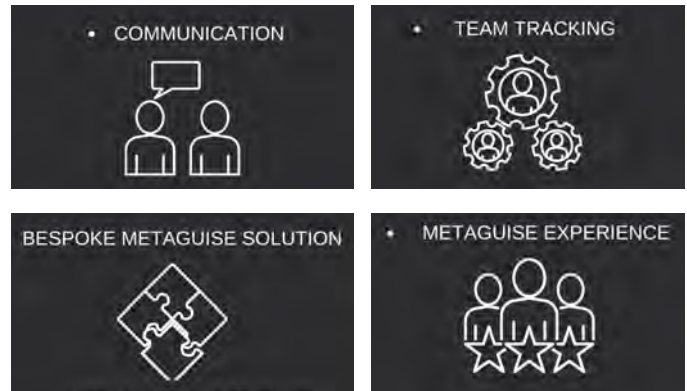
Metaguise™ Website is a complete experience of the MetaWorld.

# META APP

Metaguise™ App with real time status tracker, just a tap away.



## ADVANTAGES



# METALAND



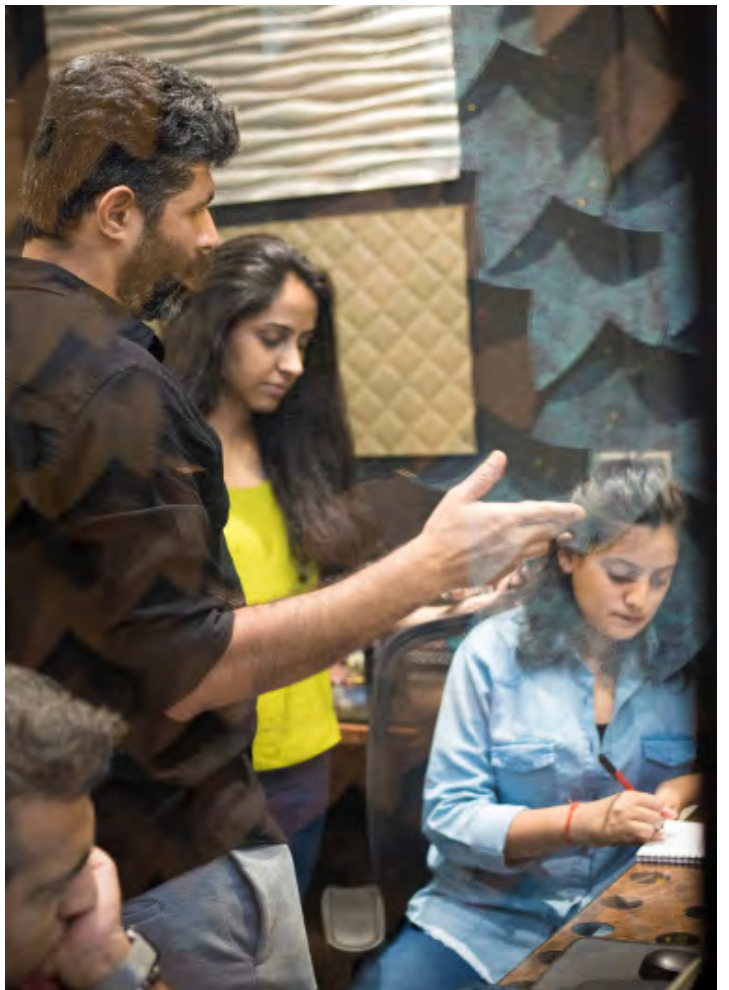
MetaLand, our multi sensory experience centre.

VISIT US AT : F 17/4, Basement, DLF Phase I, (Near Golf Course Road), Gurgaon





# METAFORCE™





Live:

Metaguise™ **App** with real time status for clients to track production and installation of ongoing projects.

Metaguise™ **Website** with a complete experience of the MetaWorld.

---

Revealing soon:

**AR / VR Tech** with a multi-sensory experience

**3-D printing** for surface development and architectural prototyping.



PART ONE METAFORM



PART THREE METASURFACE



Visit Us at:

Operation Centre : Metaguise, K9/46, Basement, DLF Phase II, Gurgaon

Experience Centre : F 17/4, Basement, DLF Phase I, (Near Golf Course Road), Gurgaon

9811604449 | 9355604449 | [contactus@metaguise.com](mailto:contactus@metaguise.com) | [www.metaguise.com](http://www.metaguise.com)