

METAGUISE™

HOME OF LUXURY METAL

PART TWO

# METAFUNCTION



Tap for google pin

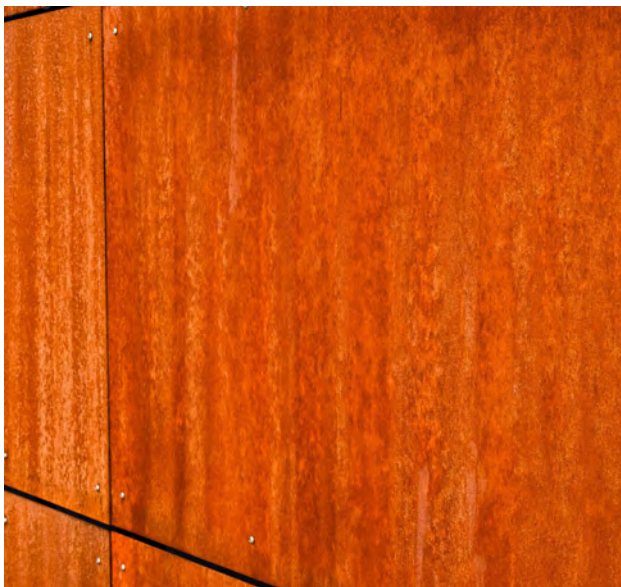
The use of metal in architecture is rapidly increasing for its versatility, aesthetics, economic value and functionality solutions.

Metaguise™ offers a seamless experience through a meticulous tech consult and delivers flawlessly crafted modular metal architecture.

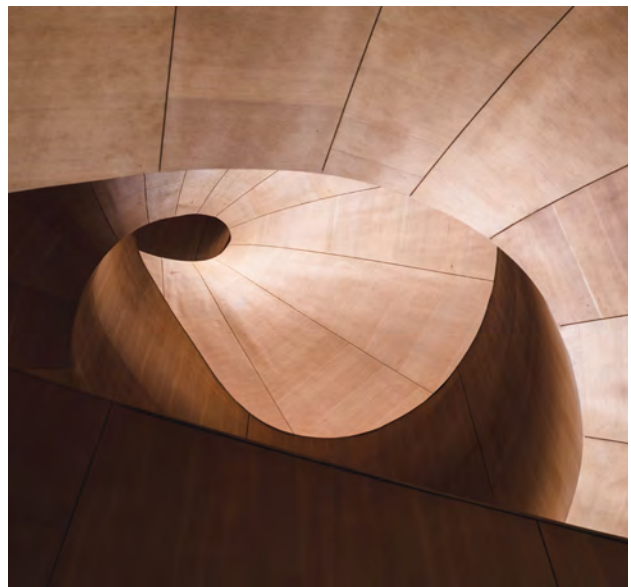
---

# METAL ARCHITECTURE

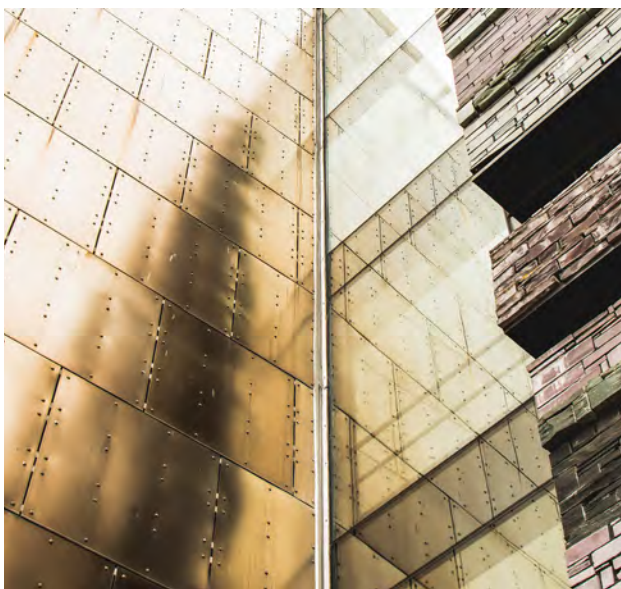
CORTEN STEEL



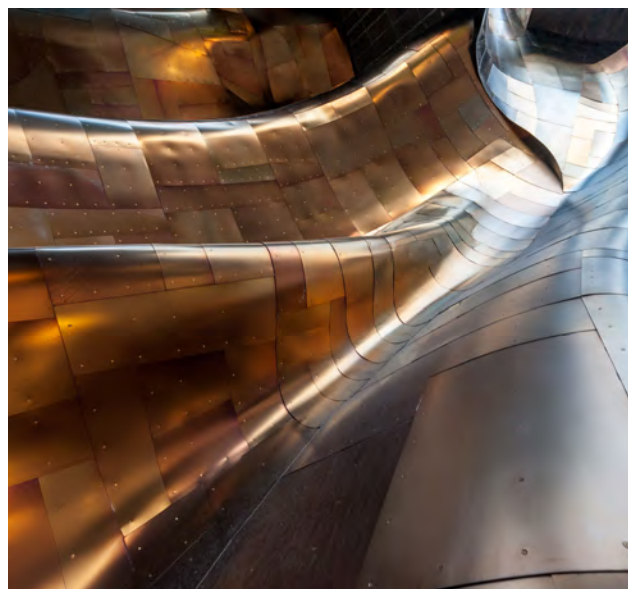
COPPER



BRASS



STAINLESS STEEL





# ALUMINIUM



ENTIRE Metaguisse™ RANGE OF CLADS ARE :-



MAINTENANCE  
FREE



FIRE  
RESISTANT



ULTRA  
DURABLE



SEEPAGE  
FREE



BUY BACK  
VALUE



RECYCLABLE



TERMITE  
PROOF



CORROSION  
RESISTANT

# The Metaguise™ Experience

The Metaguise™ engine runs on Trust, Transparency and Technical Expertise. We follow a thorough 47 step process to provide a hassle free experience to our clients, with meticulous services and workmanship.

Our process includes:

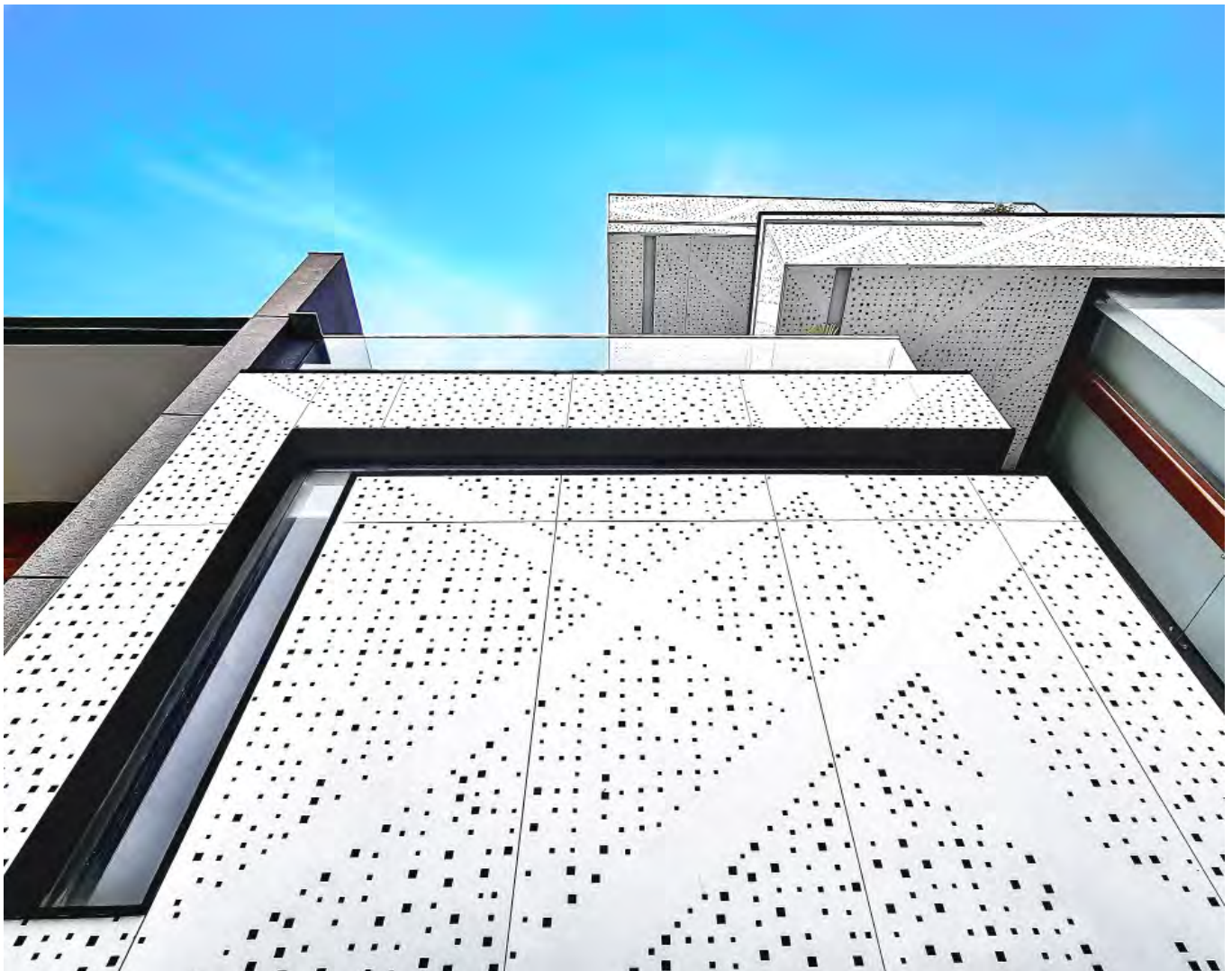
- Civil assessment at site
- Facade Consultation at site till completion
- Drawings for the metal facade intersection with concrete, stone and other surfaces of the building
- Turn key installation
- 24 hour after sales service in Delhi/NCR





Our products, developed in aluminium and other metals are engineered to perfection; retaining an accuracy of upto 3 mm.

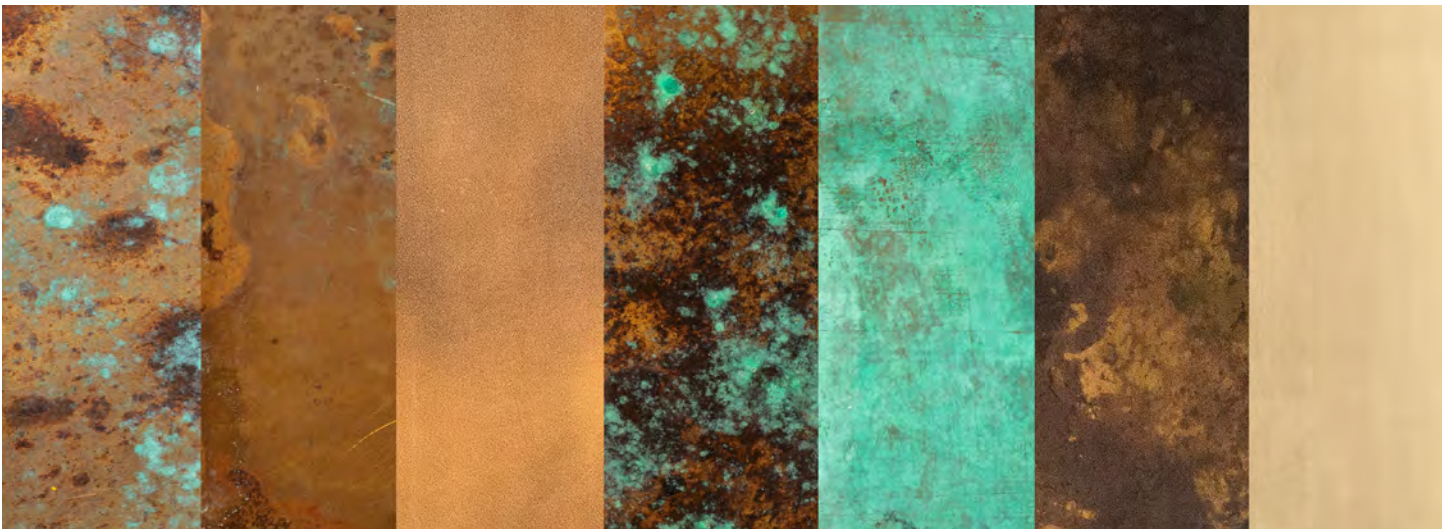
Designed in Solidworks, Rhino, Grasshopper and AutoCAD the facades are uniquely customised for every building. In addition to the extensive variety of forms, we also build kinetic and parametric structures.



Our products come in an astounding variety of VOC free surface finishes that include textures like wood, corten steel, concrete and many more.



The surface coatings come with exterior certification and warranty of 15 to 35 years \*



Our products are engineered to uphold high safety standards, certified by testing labs in the toughest of conditions for static load, wind resistance , joineries, coatings and finishes

We ensure Safety,  
Quality, Discipline and Productivity, during installation at site.

Our extensive inhouse team of engineers and designers ensure the highest quality product design and development.

# SURFACE WARRANTY CERTIFICATION



AVANZA ENTERPRISES PVT LTD guarantees to:

**CITY HOMES**

Code: WOODEN SUBLIMATION

Project:

A2/17, DLF PHASE 1  
GURUGRAM HARYANA

\*FOR REFERENCE ONLY





✓ INTERIOR

✓ EXTERIOR

✓ GATE

Folding and Sliding Mechanism is a superior alternative to traditional French or sliding patio doors. This multi-fold mechanism can create an open feel for any type of building. The multi-facet panes fold back allowing a wide opening unrestricted access. Bringing the outside into the inside, these Shutters are the most elegant solution. Whether for indoor/outdoor living, the folding and sliding mechanism is guaranteed to invite fresh air in. Its great appearance and advanced performance makes this our top seller.









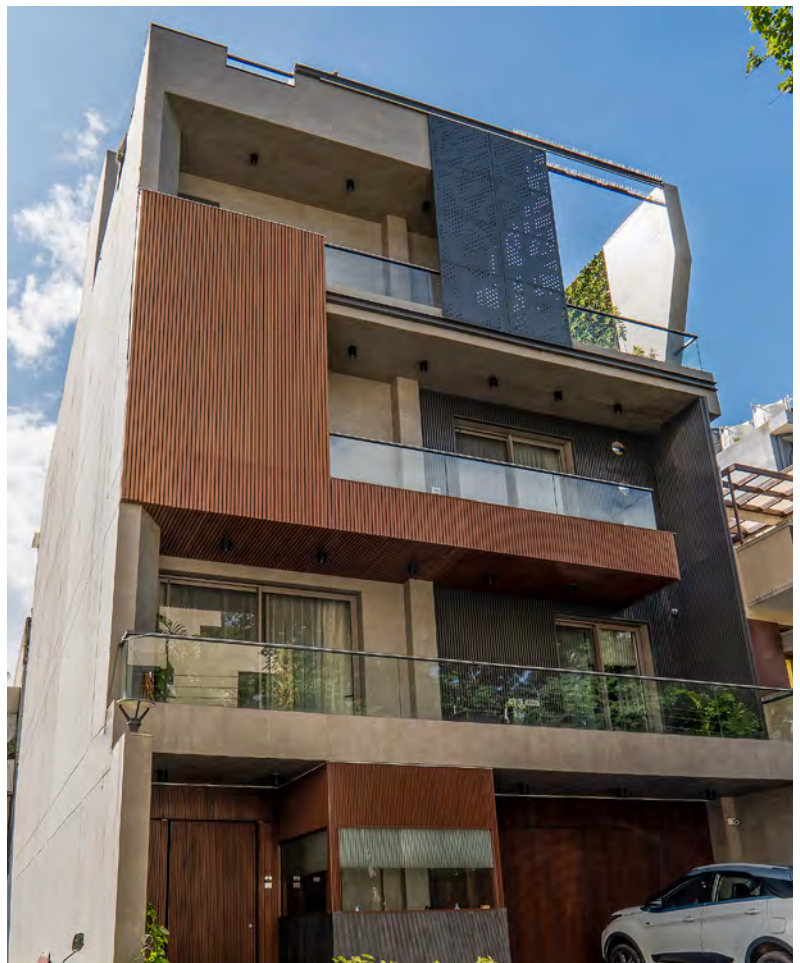
✓ INTERIOR

✓ EXTERIOR

✓ GATE

The face of a building is given variable expressions by means of sliding technology. Regardless of whether the façade is to be open or closed depending on the time of day, whether it needs to withstand certain climatic influences or it needs to convey a unique architectural idea. Sliding technology is the key to the best and most individual solution for each project we undertake.

Our slider systems can be amalgamated with a range of cladding options.





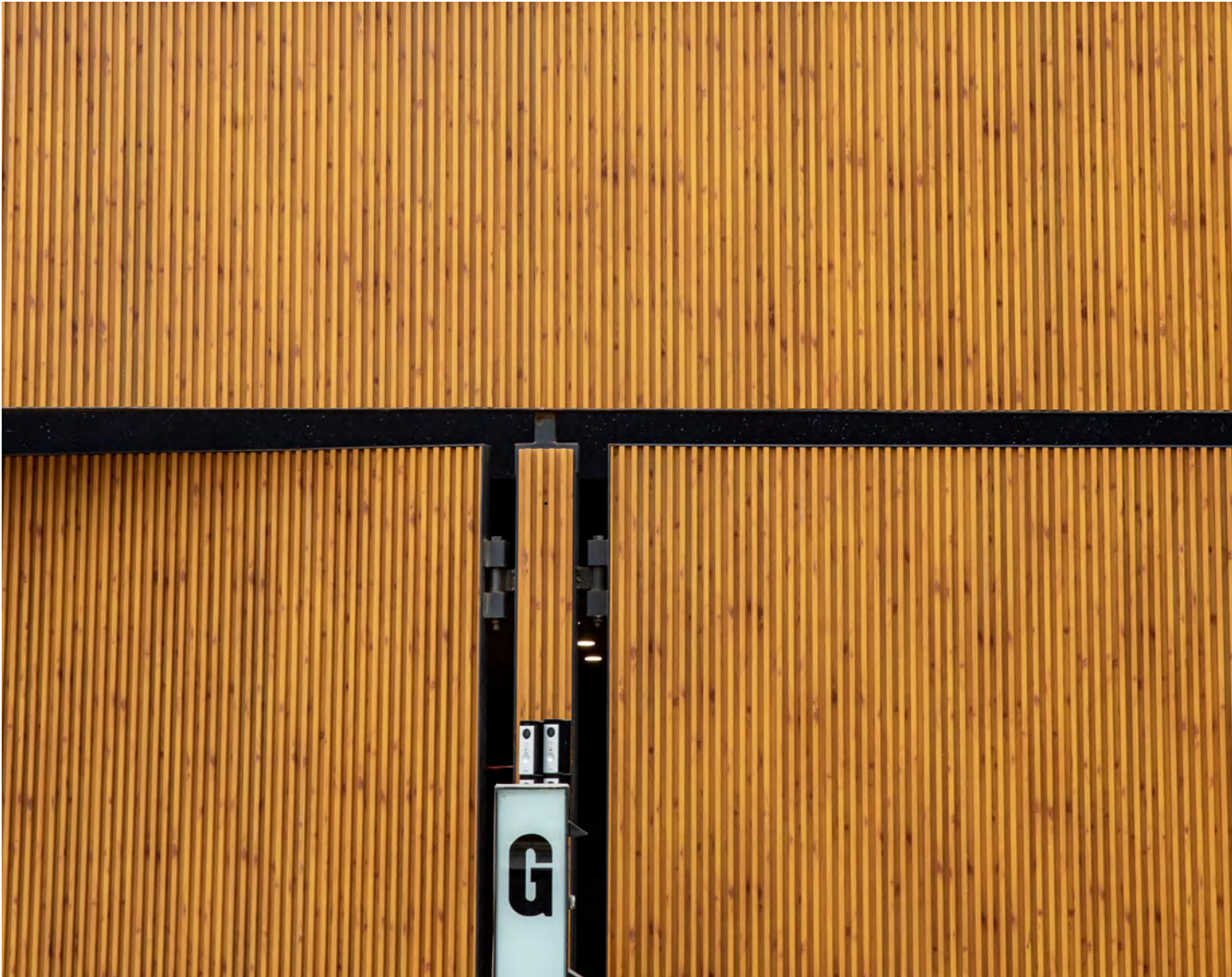




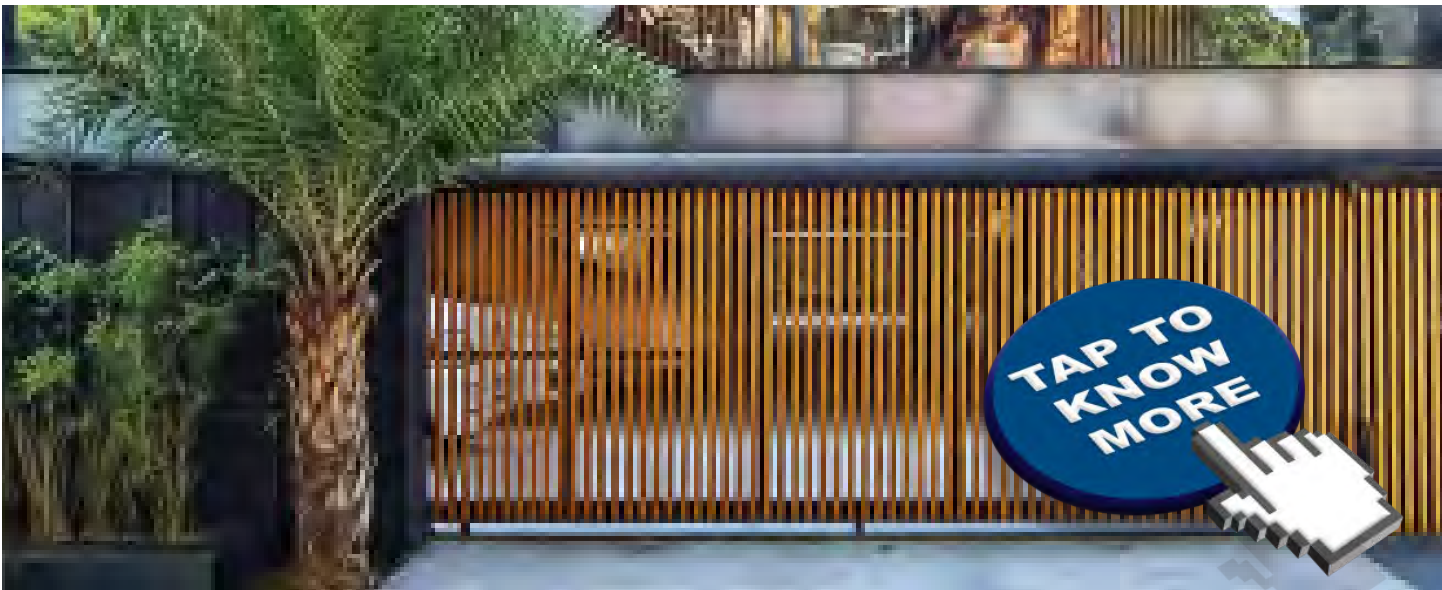
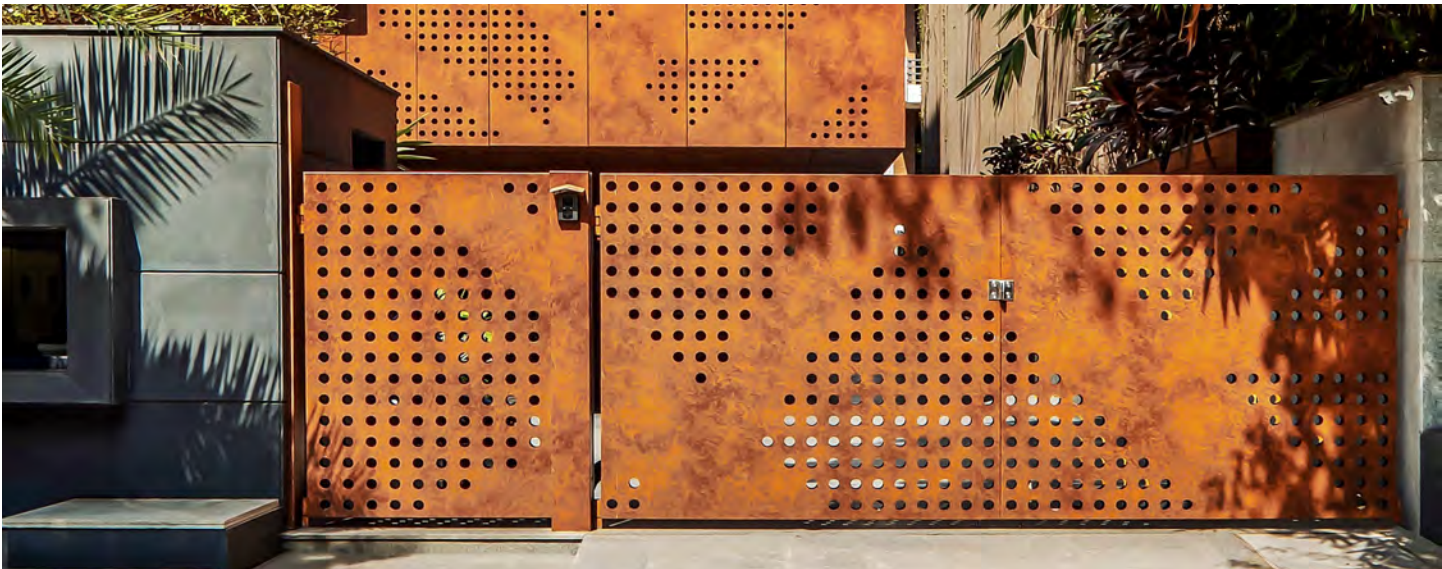


Aluminium is a Sustainable and Ultra lightweight clad for Enhancing the Aesthetics of Doorways/ Gates.

We Build gates with Manual sliding, Swing and Bi-Fold functions and offer Automation as an optional Upgrade.



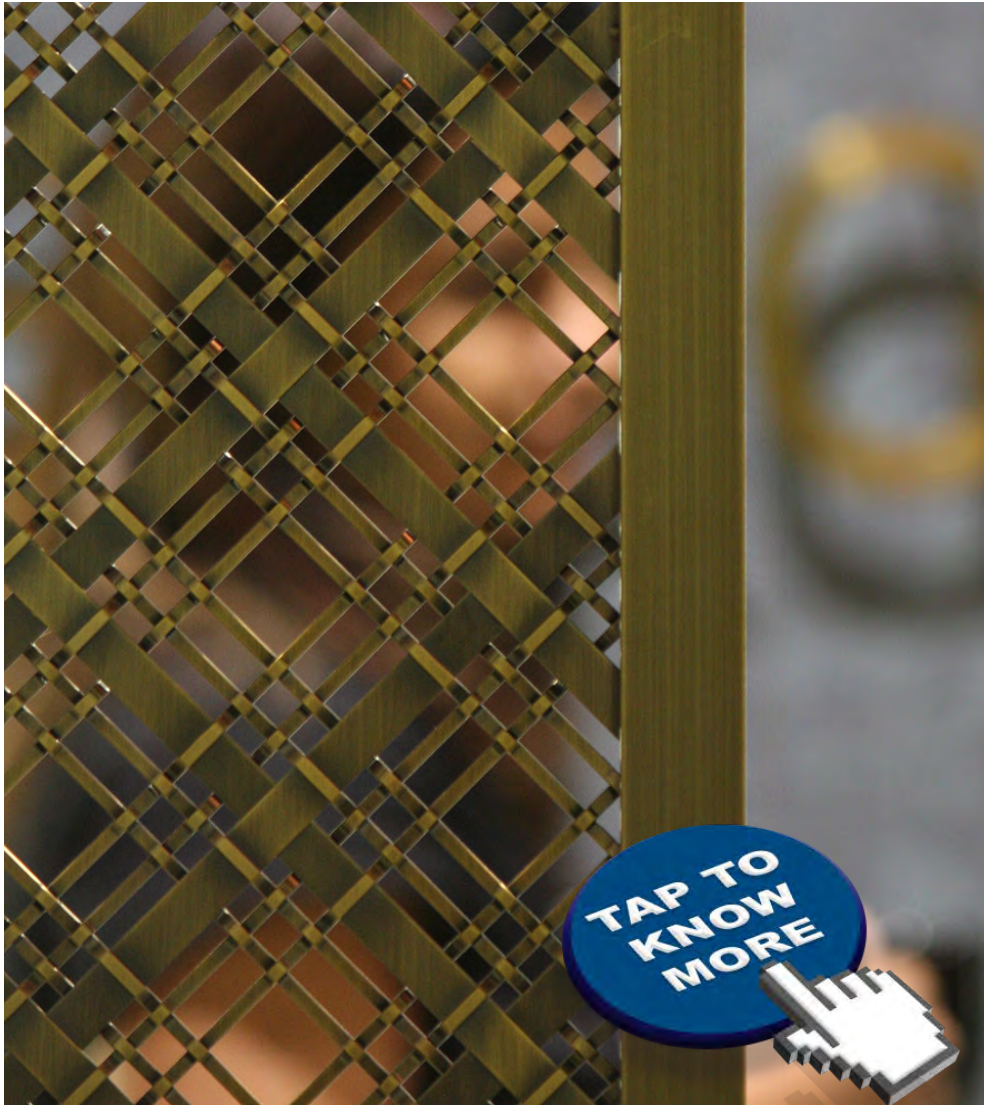




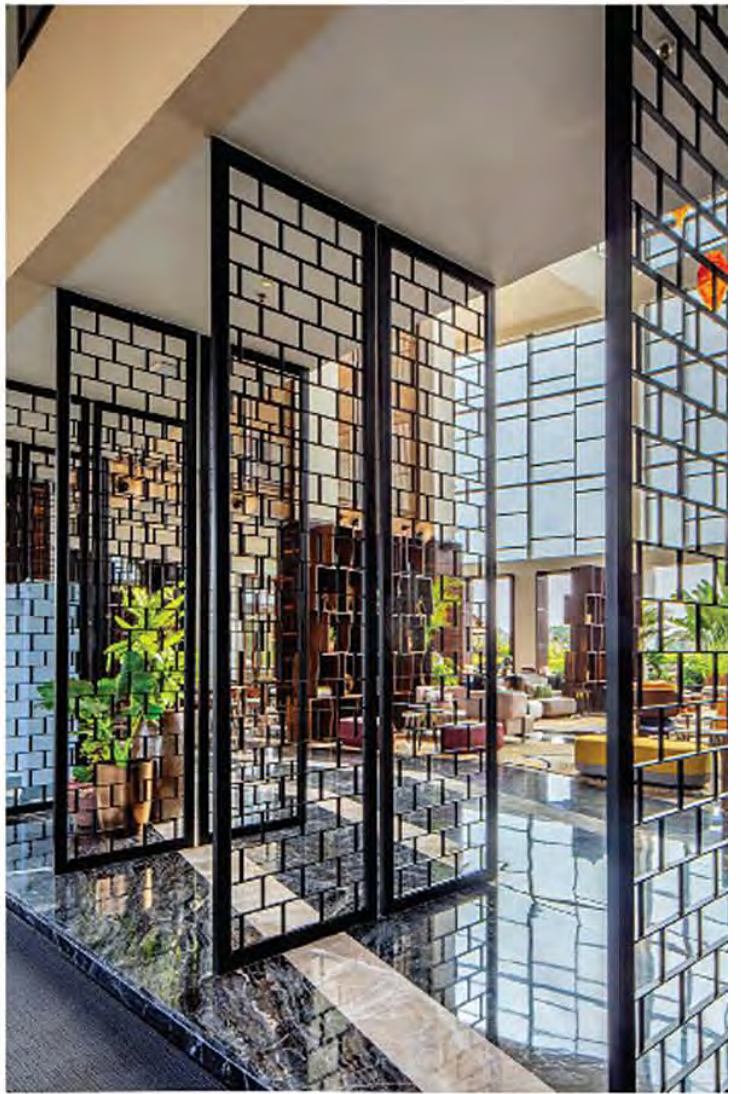




Screens are used as free-standing dividers, which are both attractive as well as functional. There are no limits to the versatility of our top quality and beautifully crafted screens. Most importantly screens are accent pieces which add character to any area and provide a focal point and visual interest.









# WALL CLADS

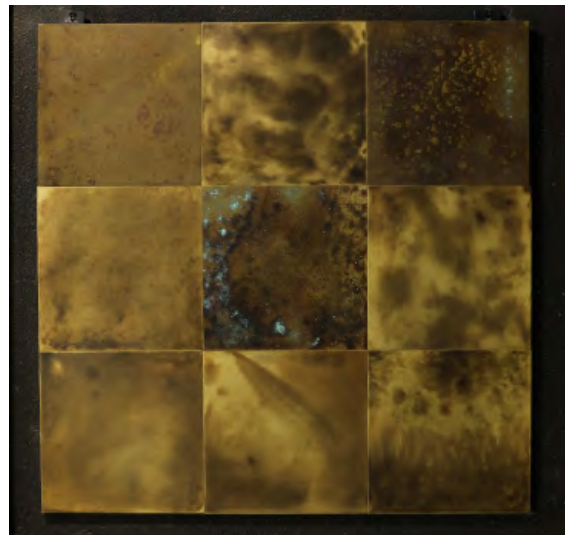
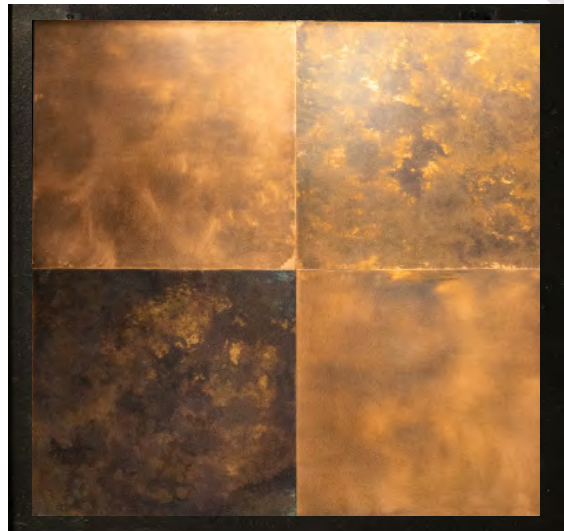


Metaguisse™ reveals an ultra sustainable, maintenance-free range of interior clads giving your home interiors an aesthetic upgrade whilst offering freedom from seepage, fire, and stains forever.

Not only a different form and vibe of the panels but also a plethora of textures helping you decide your dream option.



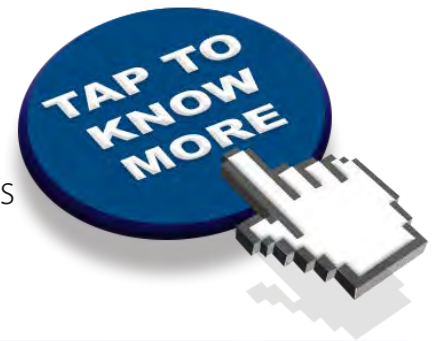
- Seepage free
- Termite proof
- Buy Back Value
- Ultra Durable
- Fire Resistant
- Recyclable





# VISION Vs REALITY

A Photo gallery of 3D Vs our Actual Facade Projects



**METAPATINA**

K 3/67, DLF Phase II, Gurgaon

9811604449 | 9355604449 | [contactus@metaguise.com](mailto:contactus@metaguise.com) | [www.metaguise.com](http://www.metaguise.com)





N 29, Greater Kailash I, New Delhi

**METAPYRAMID**







**META FOLD**



622, Sector 15 Part I, Gurgaon

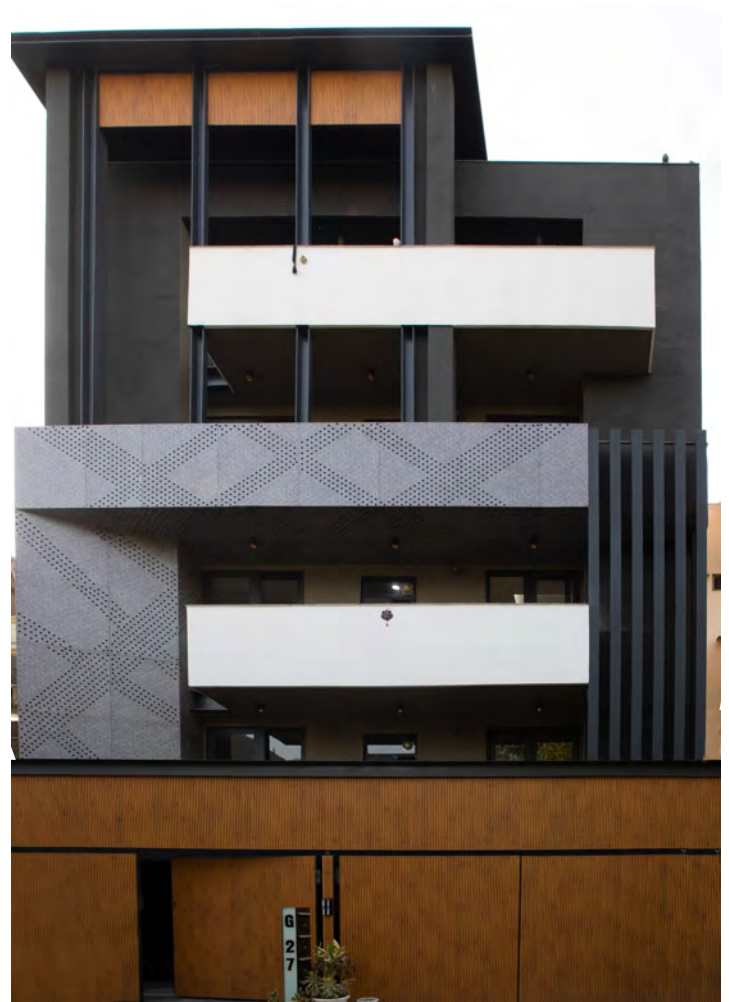
A 2/17, DLF Phase I, Gurgaon







G-27, South City I, Gurgaon

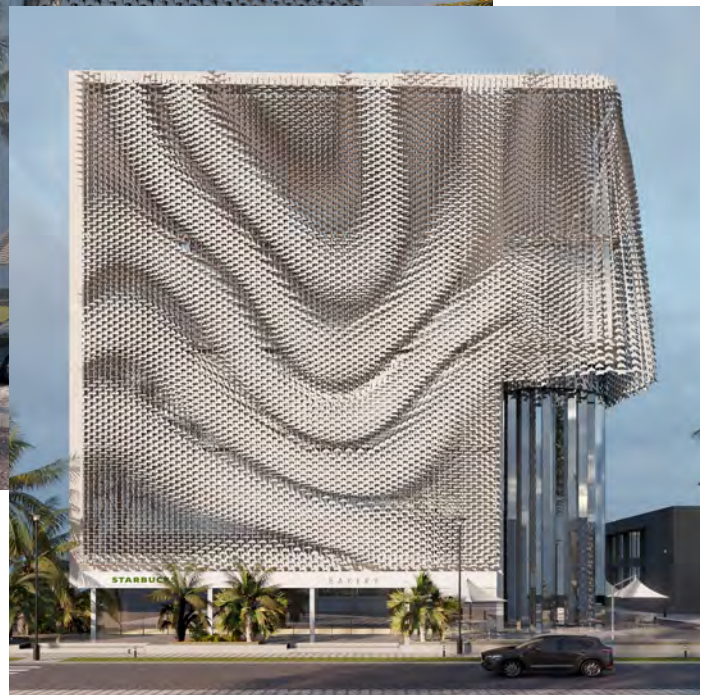


98 E Space, Nirvana, Gurgaon

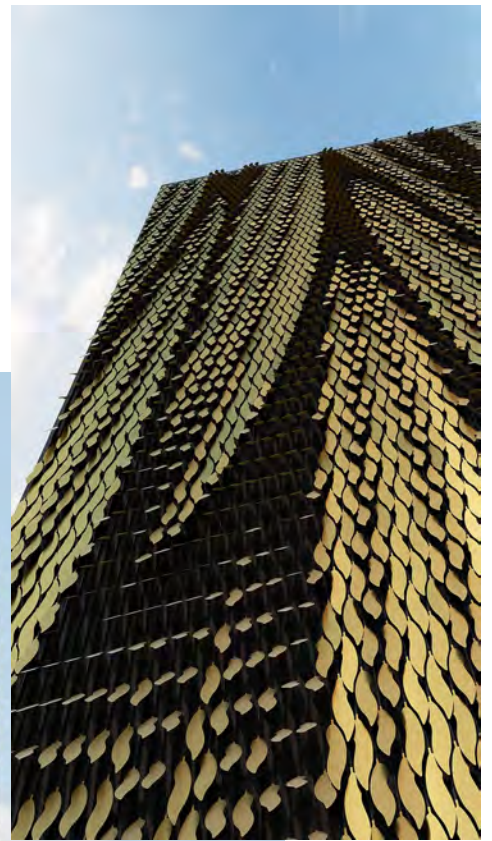
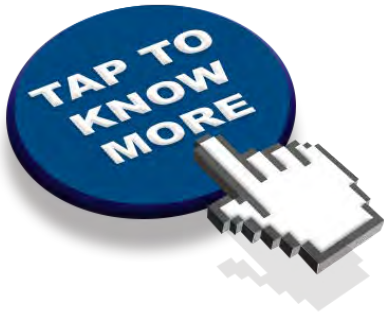




# PARAMETRIC PROJECTS

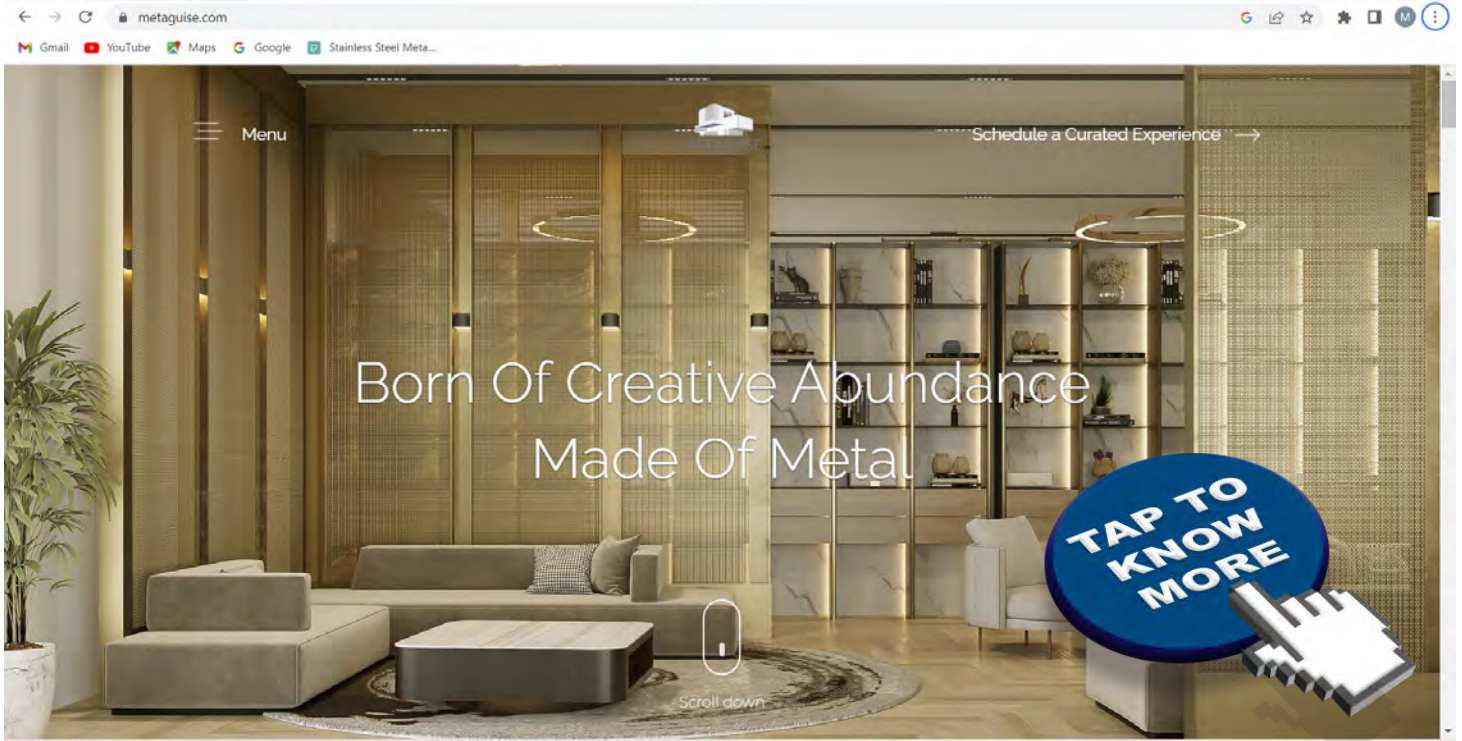








# WEBSITE

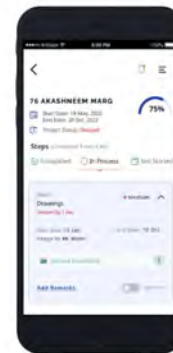
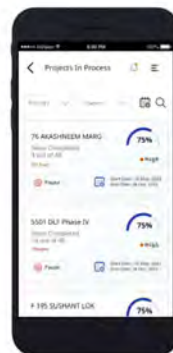
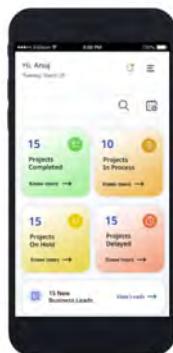
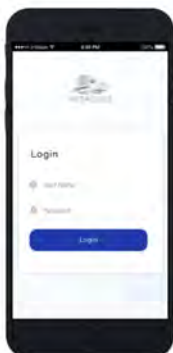
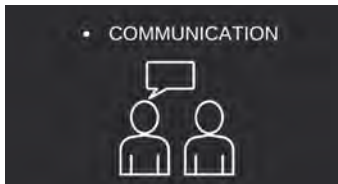


Metaguise™ Website is a complete experience of the MetaWorld.

# META APP

## ADVANTAGES

Metaguise™ App with real time status tracker, just a tap away.





# METALAND



MetaLand, our multi sensory experience centre.

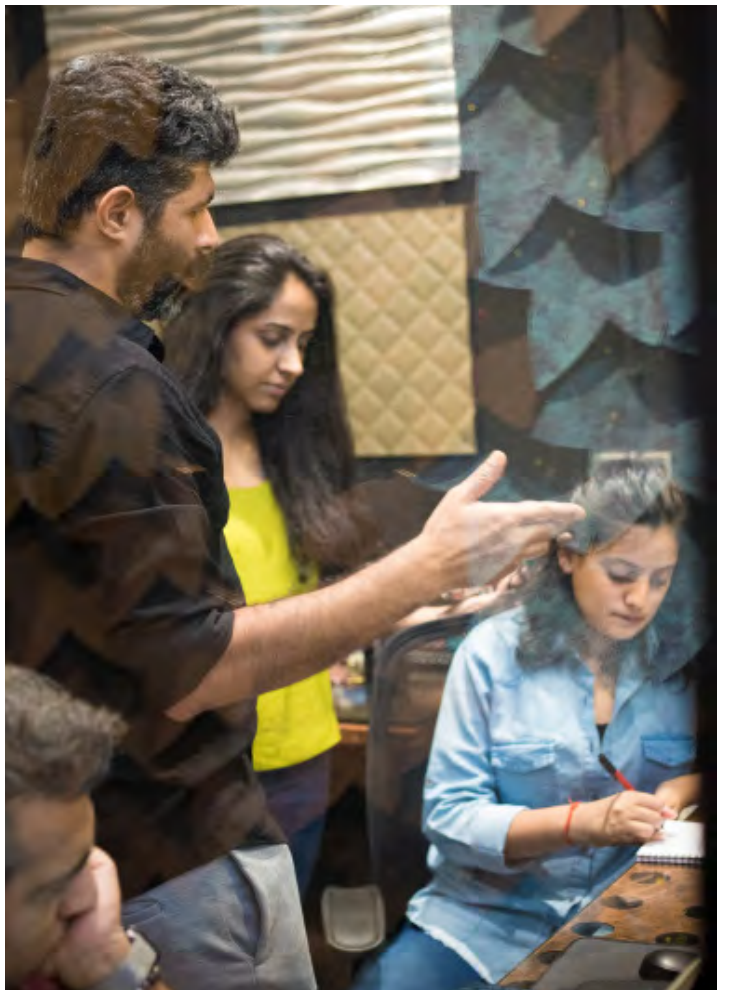
VISIT US AT : F 17/4, Basement, DLF Phase I, (Near Golf Course Road), Gurgaon







# METAFORCE™







 Live:

Metaguisse™ **App** with real time status for clients to track production and installation of ongoing projects.

Metaguisse™ **Website** with a complete experience of the MetaWorld.

---

Revealing soon:

AR/VR Tech with a multi-sensory experience

3-D printing for surface development and architectural prototyping.



PART ONE METAFORM



PART THREE METASURFACE





TAP FOR  
INSTAGRAM  
PAGE

TAP FOR  
YOUTUBE  
PAGE



Visit Us at:

Operation Centre : Metaguise, K9/46, Basement, DLF Phase II, Gurgaon

Experience Centre : F 17/4, Basement, DLF Phase I, (Near Golf Course Road), Gurgaon

9811604449 | 9355604449 | [contactus@metaguise.com](mailto:contactus@metaguise.com) | [www.metaguise.com](http://www.metaguise.com)